

Anti-FKF1/ADO3 antibody

Catalog: PHY7986A

Product Information

Description:	Rabbit polyclonal antibody
Background:	FKF1 is a blue light receptor and F-box protein in Arabidopsis that regulates photoperiodic flowering. It promotes flowering under long days by degrading the repressor CDF1 to activate CO and FT expression, stabilizing CO protein, and interacting with GI to form a light-sensitive complex. FKF1 also modulates cold stress responses and influences gibberellin signaling by degrading DELLA proteins.
Synonyms:	FKF1, flavin-binding, kelch repeat, f box 1, ADO3
Immunogen:	KLH-conjugated synthetic peptide (16 aa from N terminal section) derived from <i>Arabidopsis thaliana</i> FKF1 (AT1G68050).
Form:	Lyophilized
Quantity:	150 µg
Purification:	Immunogen affinity purified
Reconstitution:	Reconstitution with 150 µl of sterile 1XPBS (PH=7.4) containing 30% glycerol. "Note: please spin tube briefly prior to opening it to avoid any losses that might occur from lyophilized material adhering to the cap or sides of the tube".
Stability & Storage:	Use a manual defrost freezer and avoid repeated freeze-thaw cycles. 12 months from date of receipt, -20 to -70°C as supplied. 6 months, -20 to -70°C under sterile conditions after reconstitution. 1 month, 2 to 8°C under sterile conditions after reconstitution.
Shipping:	The product is shipped at 4°C. Upon receipt, store it immediately at the temperature recommended above.

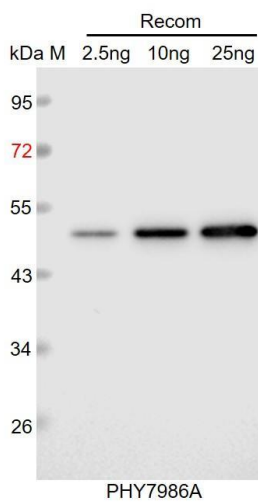
Application Information

Recommended Dilution:	Western Blot (1:1000-1:2000) Note: Optimal dilutions/concentrations should be determined by the end user.
Expected / apparent MW:	69 kDa
Predicted Reactivity:	Among species analyzed, the sequence of the synthetic peptide used

Research Use Only

for immunization is 100% homologues with the sequence in *Medicago truncatula*, *Cucumis sativus*, *Populus trichocarpa*, *Glycine max*, *Vitis vinifera*, and 94% homologues with the sequence in *Oryza sativa*, *Solanum lycopersicum*, *Nicotiana tabacum*, *Solanum tuberosum*, *Setaria viridis*, *Sorghum bicolor*, *Panicum virgatum*, *Triticum aestivum*, *Zea mays*, *Spinacia oleracea*, *Gossypium raimondii*.
For more species homologues information, please contact tech support at tech@phytoab.com.

Application Example



Recom: 2.5 ng, 10 ng and 25 ng recombinant protein containing the peptide for immunization and having a molecular mass of 52 kDa.

Electrophoresis: 12% SDS-PAGE

Transfer: blotting to NC (nitrocellulose) membrane for 1 h.

Blocking: 5% skim milk at RT or 4°C for 1 h.

Primary antibody: 1:1000 dilution overnight at 4°C.

Secondary antibody: 1:10000 dilution using Goat Anti-Rabbit IgG H&L (HRP) (Cat# PHY6000).

Detection: using chemiluminescence substrate and image were captured with CCD camera.