

Anti-HPT, C-terminal antibody

Catalog: PHY0625

Product Information

Description:	Mouse monoclonal antibody
Background:	The hygromycin phosphotransferase (denoted <i>hpt</i> , <i>hph</i> or <i>aphIV</i>) gene was originally derived from <i>Escherichia coli</i> . The gene codes for hygromycin phosphotransferase (HPT), which detoxifies the aminocyclitol antibiotic hygromycin B. A large number of plants have been transformed with the <i>hpt</i> gene and hygromycin B has proved very effective in the selection of a wide range of plants, including monocotyledonous. Most plants exhibit higher sensitivity to hygromycin B than to kanamycin, for instance cereals.
Synonyms:	HPT
Immunogen:	Synthetic peptide (18 aa from C terminal section) derived from HPT (ABI30072.1).
Form:	Lyophilized
Quantity:	150 µg
Purification:	Protein A purified
Reconstitution:	Reconstitution with 150 µl of sterile 1XPBS (PH=7.4). "Note: please spin tube briefly prior to opening it to avoid any losses that might occur from lyophilized material adhering to the cap or sides of the tube".
Stability &	Use a manual defrost freezer and avoid repeated freeze-thaw cycles.
Storage:	12 months from date of receipt, -20 to -70°C as supplied. 6 months, -20 to -70°C under sterile conditions after reconstitution. 1 month, 2 to 8°C under sterile conditions after reconstitution.
Shipping:	The product is shipped at 4°C. Upon receipt, store it immediately at the temperature recommended above.

Application Information

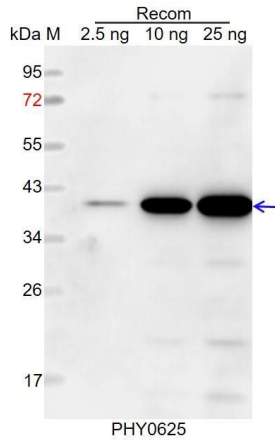
Recommended Dilution:	Western Blot (1:1000-1:2000) Note: Optimal dilutions/concentrations should be determined by the end user.
Expected / apparent MW:	38 kDa

Research Use Only

Predicted Reactivity:

Anti-HPT recognizes transgenic rice.

Application Example



Recom: 2.5 ng, 10 ng and 25 ng recombinant protein containing the peptide for immunization and having a molecular mass of 40 kDa.

Electrophoresis: 12% SDS-PAGE

Transfer: blotting to NC (nitrocellulose) membrane for 1 h.

Blocking: 5% skim milk at RT or 4°C for 1 h.

Primary antibody: 1:1000 dilution overnight at 4°C.

Secondary antibody: 1:5000 dilution using Goat Anti-Mouse IgG H&L (HRP) (Cat# PHY6006).

Detection: using chemiluminescence substrate and image were captured with CCD camera.