

# Anti-Acetolactate synthase, chloroplastic antibody

Catalog: PHY8092S

## Product Information

|                                 |   |
|---------------------------------|---|
| <b>Description:</b>             | Rabbit polyclonal antibody  |
| <b>Background:</b>              | ALS catalyzes the formation of acetolactate from pyruvate, the first step in valine and isoleucine biosynthesis.  |
| <b>Synonyms:</b>                | ALS, ACETOHYDROXY ACID SYNTHASE, ACETOLACTATE SYNTHASE, AHAS, CHLORSULFURON/IMIDAZOLINONE RESISTANT 1, CSR1, IMIDAZOLE RESISTANT 1, IMR1, TRIAZOLOPYRIMIDINE RESISTANT 5, TZP5  |
| <b>Immunogen:</b>               | KLH-conjugated synthetic peptide (15 aa from central section) derived from <i>Arabidopsis thaliana</i> ALS (AT3G48560).   |
| <b>Form:</b>                    | Lyophilized   |
| <b>Quantity:</b>                | 150 µg  |
| <b>Purification:</b>            | Serum<br>Peptide affinity form antibody available upon request at <a href="mailto:info@phytoab.com">info@phytoab.com</a> .  |
| <b>Reconstitution:</b>          | Reconstitution with 150 µl of sterile water.<br>"Note: please spin tube briefly prior to opening it to avoid any losses that might occur from lyophilized material adhering to the cap or sides of the tube".   |
| <b>Stability &amp; Storage:</b> | Use a manual defrost freezer and avoid repeated freeze-thaw cycles.<br>12 months from date of receipt, -20 to -70°C as supplied.<br>6 months, -20 to -70°C under sterile conditions after reconstitution.<br>1 month, 2 to 8°C under sterile conditions after reconstitution. |
| <b>Shipping:</b>                | The product is shipped at 4°C. Upon receipt, store it immediately at the temperature recommended above.   |

## Application Information

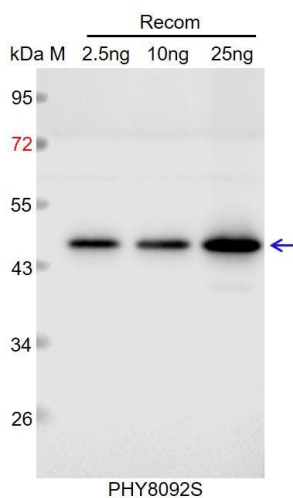
|                                |  |
|--------------------------------|--|
| <b>Recommended Dilution:</b>   | Western Blot (1:1000-1:2000)<br>Note: Optimal dilutions/concentrations should be determined by the end user. |
| <b>Expected / apparent MW:</b> | 73 kDa   |

Research Use Only

### Predicted Reactivity:

Among species analyzed, the sequence of the synthetic peptide used for immunization is 100% homologues with the sequence in *Arabidopsis thaliana*, *Cucumis sativus*, *Gossypium raimondii*, *Nicotiana tabacum*, *Solanum lycopersicum*, *Solanum tuberosum*, *Spinacia oleracea*. For more species homologues information, please contact tech support at [tech@phytoab.com](mailto:tech@phytoab.com).

### Application Example



Recom: 2.5 ng, 10 ng and 25 ng recombinant protein containing the peptide for immunization and having a molecular mass of 46 kDa.

Electrophoresis: 12% SDS-PAGE

Transfer: blotting to NC (nitrocellulose) membrane for 1 h.

Blocking: 5% skim milk at RT or 4°C for 1 h.

Primary antibody: 1:1000 dilution overnight at 4°C.

Secondary antibody: 1:10000 dilution using Goat Anti-Rabbit IgG H&L (HRP) (Cat# PHY6000).

Detection: using chemiluminescence substrate and image were captured with CCD camera.