

Anti- STARCH SYNTHASE 4 antibody

Catalog: PHY1865S

Product Information

Description:	Rabbit polyclonal antibody
Background:	SS4 is a starch synthase. In <i>Arabidopsis</i> leaves, the catalytic C-terminal region of STARCH SYNTHASE 4 promotes starch granule initiation while its non-catalytic N-terminal region determines starch granules morphology.
Synonyms:	SS4, ARABIDOPSIS THALIANA STARCH SYNTHASE 4, ATSS4, SSIV, STARCH SYNTHASE 4
Immunogen:	KLH-conjugated synthetic peptide (16 aa from C terminal section) derived from <i>Arabidopsis thaliana</i> SS4 (AT4G18240).
Form:	Lyophilized
Quantity:	150 µg
Purification:	Serum Peptide affinity form antibody available upon request at info@phytoab.com .
Reconstitution:	Reconstitution with 150 µl of sterile water. "Note: please spin tube briefly prior to opening it to avoid any losses that might occur from lyophilized material adhering to the cap or sides of the tube".
Stability & Storage:	Use a manual defrost freezer and avoid repeated freeze-thaw cycles. 12 months from date of receipt, -20 to -70°C as supplied. 6 months, -20 to -70°C under sterile conditions after reconstitution. 1 month, 2 to 8°C under sterile conditions after reconstitution.
Shipping:	The product is shipped at 4°C. Upon receipt, store it immediately at the temperature recommended above.

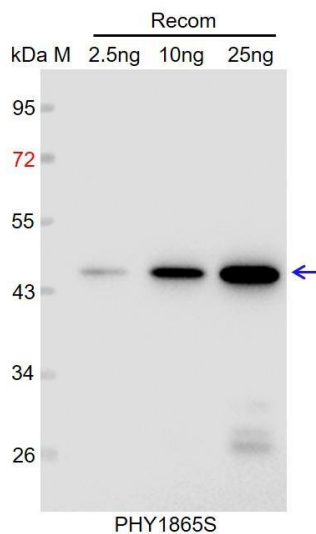
Application Information

Recommended Dilution:	Western Blot (1:1000-1:2000) Note: Optimal dilutions/concentrations should be determined by the end user.
Expected / apparent MW:	118 kDa
Predicted Reactivity:	Among species analyzed, the sequence of the synthetic peptide used for immunization is 100% homologues with the sequence in <i>Arabidopsis thaliana</i> , <i>Arabidopsis arenosa</i> , <i>Arabidopsis suecica</i> ,

Research Use Only

Arabidopsis thaliana, *Arabidopsis nemorensis*, *Brassica campestris*, *Brassica carinata*, *Brassica napus*, *Brassica rapa subsp. Trilocularis*, *Cardamine amara subsp. Amara*, *Eruca vesicaria subsp. Sativa*, *Eutrema salsugineum*, *Microthlaspi erraticum*, *Thlaspi arvense*. For more species homologues information, please contact tech support at tech@phytoab.com.

Application Example



Recom: 2.5 ng and 15 ng recombinant protein containing the peptide for immunization and having a molecular mass of 45 kDa.

Electrophoresis: 12% SDS-PAGE.

Transfer: blotting to NC (nitrocellulose) membrane for 1 h.

Blocking: 5% skim milk at RT or 4°C for 1 h.

Primary antibody: 1:1000 dilution overnight at 4°C.

Secondary antibody: 1:10000 dilution using Goat Anti-Rabbit IgG H&L (HRP) (Cat# PHY6000).

Detection: using chemiluminescence substrate and image were captured with CCD camera.