

# Anti-Betaine aldehyde dehydrogenase 2 antibody

Catalog: PHY4658S

## Product Information

<b>Description:</b>	Rabbit polyclonal antibody
<b>Background:</b>	BADH2 is the dehydrogenase that can use N-acetyl-gamma-aminobutyraldehyde (NAGABald), gamma-guanidinobutyraldehyde (GGBald), betaine aldehyde (Bet-ald), gamma-aminobutyraldehyde (GAB-ald), acetaldehyde, 4-aminobutylaldehyde (AB-ald), 3-aminopropionaldehyde (AP-ald), 4-N-trimethylaminobutyraldehyde (TMAB-ald) and 3-N-trimethylaminopropionaldehyde (TMAP-ald) as substrates.
<b>Synonyms:</b>	BADH2, SK2(T)(SCL, FGR), sk2(t)(scl, fgr), fgr, scl, BAD2, BADH2, sk2, OsBADH2, Os2AP, BADH-2, OsALDH10A8, ALDH10A8
<b>Immunogen:</b>	KLH-conjugated synthetic peptide (14 aa from N terminal section) derived from <i>Oryza sativa</i> BADH2 (Os08g0424500).
<b>Form:</b>	Lyophilized
<b>Quantity:</b>	150 µg
<b>Purification:</b>	Serum Peptide affinity form antibody available upon request at <a href="mailto:info@phytoab.com">info@phytoab.com</a> .
<b>Reconstitution:</b>	Reconstitution with 150 µl of sterile water. "Note: please spin tube briefly prior to opening it to avoid any losses that might occur from lyophilized material adhering to the cap or sides of the tube".
<b>Stability &amp; Storage:</b>	Use a manual defrost freezer and avoid repeated freeze-thaw cycles. 12 months from date of receipt, -20 to -70°C as supplied. 6 months, -20 to -70°C under sterile conditions after reconstitution. 1 month, 2 to 8°C under sterile conditions after reconstitution.
<b>Shipping:</b>	The product is shipped at 4°C. Upon receipt, store it immediately at the temperature recommended above.

## Application Information

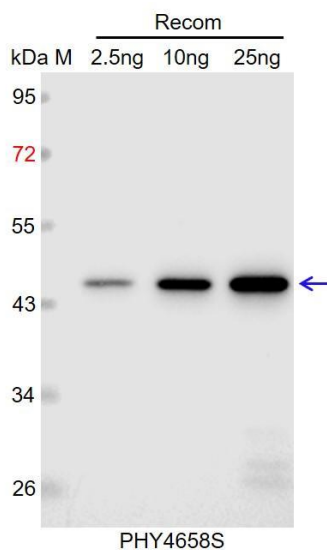
<b>Recommended Dilution:</b>	Western Blot (1:1000-1:2000) Note: Optimal dilutions/concentrations should be determined by the end user.
<b>Expected / apparent MW:</b>	55 kDa

Research Use Only

### Predicted Reactivity:

Among species analyzed, the sequence of the synthetic peptide used for immunization is 100% homologues with the sequence in *Oryza barthii*, *Oryza glaberrima*, *Oryza glumipatula*, *Oryza nivara*, *Oryza rufipogon*, *Oryza sativa subsp. Indica*, *Oryza sativa subsp. Japonica*, and 94% homologues with the sequence in *Dichanthelium oligosanthes*, *Digitaria exilis*, *Eleusine coracana subsp. coracana*, *Eragrostis curvula*, *Miscanthus lutarioriparius*, *Panicum hallii var. hallii*, *Panicum miliaceum*, *Panicum virgatum*, *Paspalum notatum var. sauriae*, *Sorghum bicolor*, *Urochloa decumbens*, *Zea mays*. For more species homologues information, please contact tech support at [tech@phytoab.com](mailto:tech@phytoab.com).

### Application Example



Recom: 2.5 ng, 10 ng and 25 ng recombinant protein containing the peptide for immunization and having a molecular mass of 45 kDa.

**Electrophoresis:** 12% SDS-PAGE

**Transfer:** blotting to NC (nitrocellulose) membrane for 1 h.

**Blocking:** 5% skim milk at RT or 4°C for 1 h.

**Primary antibody:** 1:1000 dilution overnight at 4°C.

**Secondary antibody:** 1:10000 dilution using Goat Anti-Rabbit IgG H&L (HRP) (Cat# PHY6000).

**Detection:** using chemiluminescence substrate and image were captured with CCD camera.