

Anti-Adenine Phosphoribosyltransferase 5 antibody

Catalog: PHY7976A

Product Information

Description:	Rabbit polyclonal antibody
Background:	APT5 catalyzes a salvage reaction resulting in the formation of AMP that is energetically less costly than de novo synthesis. It may contribute to the recycling of adenine into adenylate nucleotides and the inactivation of cytokinins by phosphoribosylation.
Synonyms:	APT5
Immunogen:	KLH-conjugated synthetic peptide (14 aa from C terminal section) of derived from <i>Arabidopsis thaliana</i> APT5 (AT5G11160).
Form:	Lyophilized
Quantity:	150 µg
Purification:	Immunogen affinity purified
Reconstitution:	Reconstitute with 150 µL of sterile 1×PBS (pH 7.4) containing 30–40% glycerol. If glycerol is incompatible with your applications, use 1×PBS alone and use the reconstituted antibody promptly. "Note: please spin tube briefly prior to opening it to avoid any losses that might occur from lyophilized material adhering to the cap or sides of the tube".
Stability & Storage:	Use a manual defrost freezer and avoid repeated freeze-thaw cycles. 12 months from date of receipt, -20 to -70°C as supplied. 6 months, -20 to -70°C under sterile conditions after reconstitution. 1 month, 2 to 8°C under sterile conditions after reconstitution.
Shipping:	The product is shipped at 4°C. Upon receipt, store it immediately at the temperature recommended above.

Application Information

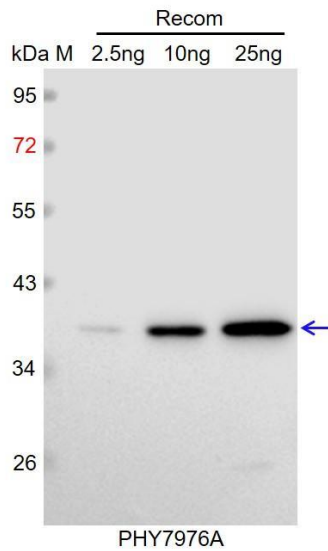
Recommended Dilution:	Western Blot (1:1000-1:2000) Note: Optimal dilutions/concentrations should be determined by the end user.
Expected / apparent MW:	21 kDa
Predicted Reactivity:	Among species analyzed, the sequence of the synthetic peptide used

Research Use Only

for immunization is 100% homologues with the sequence in *Brassica rapa*, *Brassica napus*.

For more species homologues information, please contact tech support at tech@phytoab.com.

Application Example



Recom: 2.5 ng, 10 ng and 25 ng recombinant protein containing the peptide for immunization and having a molecular mass of 39 kDa.

Electrophoresis: 12% SDS-PAGE

Transfer: blotting to NC (nitrocellulose) membrane for 1 h.

Blocking: 5% skim milk at RT or 4°C for 1 h.

Primary antibody: 1:1000 dilution overnight at 4°C.

Secondary antibody: 1:10000 dilution using Goat Anti-Rabbit IgG H&L (HRP) (Cat# PHY6000).

Detection: using chemiluminescence substrate and image were captured with CCD camera.