

# Anti-OsDWARF14 antibody

Catalog: PHY4600A

## Product Information

<b>Description:</b>	Rabbit polyclonal antibody
<b>Background:</b>	D14 is a dual-function receptor/hydrolase in rice that binds and hydrolyzes strigolactones (SLs). It triggers SL signaling by forming a complex with D3/MAX2 upon SL hydrolysis, leading to ubiquitination and degradation of repressors like D53. This pathway suppresses shoot branching and regulates root architecture and symbiotic interactions.
<b>Synonyms:</b>	D14, d14(d10), dwf13, d10, d14, D88, HTD2, OsD14, qPPB3, D88/D14, OsHTD2, HTD4
<b>Immunogen:</b>	KLH-conjugated synthetic peptide (16 aa from central section) derived from <i>Oryza sativa</i> D14 (Os03g0203200).
<b>Form:</b>	Lyophilized
<b>Quantity:</b>	150 µg
<b>Purification:</b>	Immunogen affinity purified
<b>Reconstitution:</b>	Reconstitute with 150 µL of sterile 1×PBS (pH 7.4) containing 30–40% glycerol. If glycerol is incompatible with your applications, use 1×PBS alone and use the reconstituted antibody promptly. "Note: please spin tube briefly prior to opening it to avoid any losses that might occur from lyophilized material adhering to the cap or sides of the tube".
<b>Stability &amp; Storage:</b>	Use a manual defrost freezer and avoid repeated freeze-thaw cycles. 12 months from date of receipt, -20 to -70°C as supplied. 6 months, -20 to -70°C under sterile conditions after reconstitution. 1 month, 2 to 8°C under sterile conditions after reconstitution.
<b>Shipping:</b>	The product is shipped at 4°C. Upon receipt, store it immediately at the temperature recommended above.

## Application Information

<b>Recommended Dilution:</b>	Western Blot (1:1000-1:2000) Note: Optimal dilutions/concentrations should be determined by the end user.
------------------------------	--

Research Use Only

**Expected / apparent MW:**

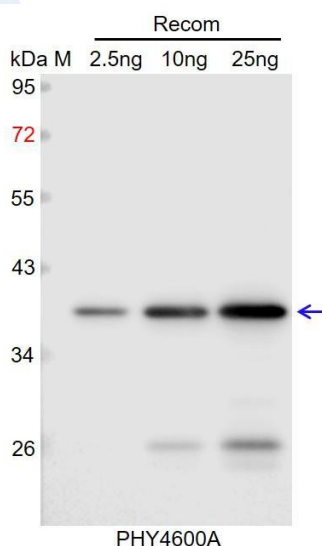
34 kDa

**Predicted Reactivity:**

Among species analyzed, the sequence of the synthetic peptide used for immunization is 100% homologues with the sequence in *Acacia crassicarpa*, *Acorus calamus*, *Acorus gramineus*, *Amborella trichopoda*, *Bauhinia variegata*, *Canna indica*, *Colocasia esculenta*, *Dendrobium catenatum*, *Dendrobium chrysotoxum*, *Dendrobium nobile*, *Dendrobium thyrsiflorum*, *Dioscorea alata*, *Dioscorea cayennensis* subsp. *rotundata*, *Dioscorea zingiberensis*, *Elaeis guineensis* var. *tenera*, *Ensete ventricosum*, *Iris pallida*, *Leersia perrieri*, *Musa acuminata* subsp. *malaccensis*, *Musa balbisiana*, *Musa troglodytarum*, *Oryza barthii*, *Oryza brachyantha*, *Oryza glaberrima*, *Oryza glumipatula*, *Oryza meridionalis*, *Oryza meyeriana* var. *granulata*, *Oryza nivara*, *Oryza punctata*, *Oryza rufipogon*, *Parasponia andersonii*, *Phoenix dactylifera*, *Pisum sativum*, *Platanthera zijinensis*, *Senna tora*, *Tetracentron sinense*, *Trema orientale*, *Vanilla planifolia*, *Vicia faba*, *Zingiber officinale*, *Zizania palustris*, *Zostera marina*.

For more species homologues information, please contact tech support at [tech@phytoab.com](mailto:tech@phytoab.com).

### Application Example



Recom: 2.5 ng, 10 ng and 25 ng recombinant protein containing the peptide for immunization and having a molecular mass of 40 kDa.

**Electrophoresis:** 12% SDS-PAGE

**Transfer:** blotting to NC (nitrocellulose) membrane for 1 h.

**Blocking:** 5% skim milk at RT or 4°C for 1 h.

**Primary antibody:** 1:1000 dilution overnight at 4°C.

**Secondary antibody:** 1:10000 dilution using Goat Anti-Rabbit IgG H&L (HRP) (Cat# PHY6000).

**Detection:** using chemiluminescence substrate and image were captured with CCD camera.