

Anti-Ribonuclease 3 antibody

Catalog: PHY1512A

Product Information

Description:	Rabbit polyclonal antibody
Background:	RNS3 may remobilize phosphate, particularly when cells senesce or when phosphate becomes limiting.
Synonyms:	RNS3; RIBONUCLEASE 3;
Immunogen:	KLH-conjugated synthetic peptide (15 aa from C terminal section) derived from <i>Arabidopsis thaliana</i> RNS3 (AT1G26820).
Form:	Lyophilized
Quantity:	150 µg
Purification:	Immunogen affinity purified
Reconstitution:	Reconstitute with 150 µL of sterile 1×PBS (pH 7.4) containing 30–40% glycerol. If glycerol is incompatible with your applications, use 1×PBS alone and use the reconstituted antibody promptly. "Note: please spin tube briefly prior to opening it to avoid any losses that might occur from lyophilized material adhering to the cap or sides of the tube".
Stability & Storage:	Use a manual defrost freezer and avoid repeated freeze-thaw cycles. 12 months from date of receipt, -20 to -70°C as supplied. 6 months, -20 to -70°C under sterile conditions after reconstitution. 1 month, 2 to 8°C under sterile conditions after reconstitution.
Shipping:	The product is shipped at 4°C. Upon receipt, store it immediately at the temperature recommended above.

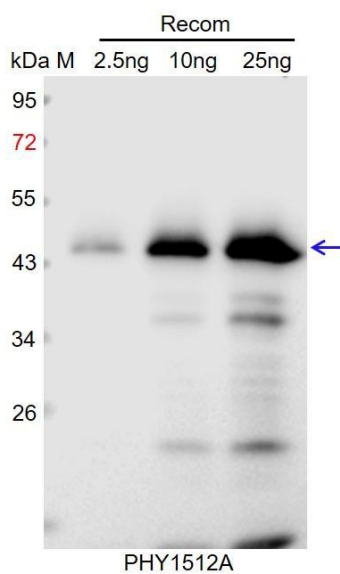
Application Information

Recommended Dilution:	Western Blot (1:1000-1:2000) Note: Optimal dilutions/concentrations should be determined by the end user.
Expected / apparent MW:	26 kDa
Predicted Reactivity:	Among species analyzed, the sequence of the synthetic peptide used for immunization is 100% <i>Arabidopsis lyrata</i> subsp. <i>lyrata</i> , <i>Arabidopsis suecica</i> , <i>Olea europaea</i> subsp. <i>europaea</i> , and

Research Use Only

93% homologues with the sequence in *Arabidopsis arenosa*, *Arabis alpina*, *Brassica campestris*, *Brassica carinata*, *Brassica napus*, *Brassica oleracea var. oleracea*, *Brassica rapa subsp. trilocularis*, *Camelina sativa*, *Cardamine amara subsp. amara*, *Eruca vesicaria subsp. sativa*, *Microthlaspi erraticum*, *Raphanus sativus*.
For more species homologues information, please contact tech support at tech@phytoab.com.

Application Example



Recom: 2.5 ng, 10 ng and 25 ng recombinant protein containing the peptide for immunization and having a molecular mass of 45 kDa.

Electrophoresis: 12% SDS-PAGE

Transfer: blotting to NC (nitrocellulose) membrane for 1 h.

Blocking: 5% skim milk at RT or 4°C for 1 h.

Primary antibody: 1:1000 dilution overnight at 4°C.

Secondary antibody: 1:10000 dilution using Goat Anti-Rabbit IgG H&L (HRP) (Cat# PHY6000).

Detection: using chemiluminescence substrate and image were captured with CCD camera.