

Anti-CCM1 antibody

Catalog: PHY5730A

Product Information

Description:	Rabbit polyclonal antibody
Background:	CCM1 is a protein essential for the carbon-concentrating mechanism (CCM) in <i>Chlamydomonas reinhardtii</i> . It is required for efficient CO ₂ fixation, particularly under low-CO ₂ conditions.
Synonyms:	CCM1, CCM1-A
Immunogen:	KLH-conjugated synthetic peptide (19 aa from C terminal section) derived from <i>Chlamydomonas reinhardtii</i> CCM1 (Cre02.g096300).
Form:	Lyophilized
Quantity:	150 µg
Purification:	Immunogen affinity purified
Reconstitution:	Reconstitute with 150 µL of sterile 1×PBS (pH 7.4) containing 30–40% glycerol. If glycerol is incompatible with your applications, use 1×PBS alone and use the reconstituted antibody promptly. "Note: please spin tube briefly prior to opening it to avoid any losses that might occur from lyophilized material adhering to the cap or sides of the tube".
Stability & Storage:	Use a manual defrost freezer and avoid repeated freeze-thaw cycles. 12 months from date of receipt, -20 to -70°C as supplied. 6 months, -20 to -70°C under sterile conditions after reconstitution. 1 month, 2 to 8°C under sterile conditions after reconstitution.
Shipping:	The product is shipped at 4°C. Upon receipt, store it immediately at the temperature recommended above.

Application Information

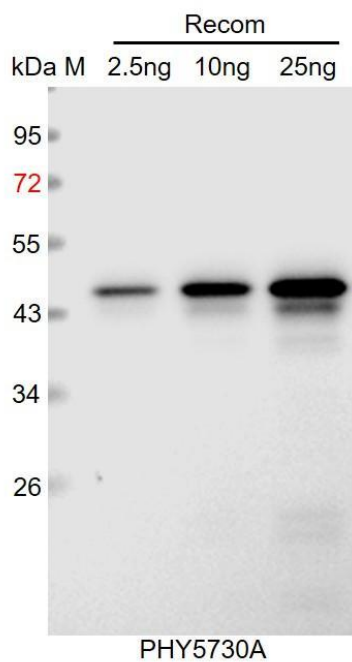
Recommended Dilution:	Western Blot (1:1000-1:2000) Note: Optimal dilutions/concentrations should be determined by the end user.
Expected / apparent MW:	70 kDa
Predicted Reactivity:	Among species analyzed, the sequence of the synthetic peptide used for immunization is 100% homologues with the sequence in

Research Use Only

Chlamydomonas incerta, *Chlamydomonas reinhardtii*, *Chlamydomonas schloesseri*, 90% homologues with the sequence in *Astrephomene gubernaculifera*, *Bordetella bronchialis*, *Desulfobaculum xiamenense*, *Jannaschia donghaensis*, *Longimycelium tulufanense*, *Paludibacterium purpuratum*, *Pseudomonas aphyarum*, *Pseudomonas fitomaticsae*, *Pseudomonas hormoni*, *Pseudomonas koreensis*, *Pseudomonas migulae*, *Pseudomonas serboccidentalis*, *Pseudomonas vancouverensis*, *Rugamonas rubra*.

For more species homologues information, please contact tech support at tech@phytoab.com.

Application Example



Recom: 2.5 ng, 10 ng and 25 ng recombinant protein containing the peptide for immunization and having a molecular mass of 45 kDa.

Electrophoresis: 12% SDS-PAGE

Transfer: blotting to NC (nitrocellulose) membrane for 1 h.

Blocking: 5% skim milk at RT or 4°C for 1 h.

Primary antibody: 1:1000 dilution overnight at 4°C.

Secondary antibody: 1:10000 dilution using Goat Anti-Rabbit IgG H&L (HRP) (Cat# PHY6000).

Detection: using chemiluminescence substrate and image were captured with CCD camera.