

Anti- PETC / Cytochrome b6-f complex iron-sulfur subunit, chloroplastic antibody

Catalog: PHY5726S

Product Information

Description:	Rabbit polyclonal antibody
Background:	Component of the cytochrome b6-f complex, which mediates electron transfer between photosystem II (PSII) and photosystem I (PSI), cyclic electron flow around PSI, and state transitions.
Synonyms:	CrPETC, petC, Plastohydroquinone: plastocyanin oxidoreductase iron-sulfur protein, Rieske iron-sulfur protein (ISP; RISP)
Immunogen:	KLH-conjugated synthetic peptide (16 aa from central section) derived from <i>Chlamydomonas reinhardtii</i> petC (Cre11.g467689).
Form:	Lyophilized
Quantity:	150 µg
Purification:	Serum
Reconstitution:	Reconstitution with 150 µl of sterile water. "Note: please spin tube briefly prior to opening it to avoid any losses that might occur from lyophilized material adhering to the cap or sides of the tube".
Stability & Storage:	Use a manual defrost freezer and avoid repeated freeze-thaw cycles. 12 months from date of receipt, -20 to -70°C as supplied. 6 months, -20 to -70°C under sterile conditions after reconstitution. 1 month, 2 to 8°C under sterile conditions after reconstitution.
Shipping:	The product is shipped at 4°C. Upon receipt, store it immediately at the temperature recommended above.

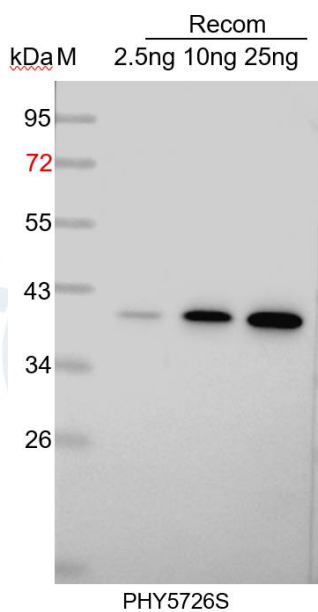
Application Information

Recommended Dilution:	Western Blot (1:1000-1:2000) Note: Optimal dilutions/concentrations should be determined by the end user.
Expected / apparent MW:	21.5 kDa
Predicted Reactivity:	Among species analyzed, the sequence of the synthetic peptide used

Research Use Only

for immunization is **100%** homologues with the sequence in *Chlamydomonas reinhardtii*, *Chlamydomonas schloesseri*, *Romeriopsis navalis* LEGE 11480, **90%** homologues with the sequence in *Micromonas commoda* (strain RCC299 / NOUM17 / CCMP2709), *Gonium pectoral*, *Chlamydomonas incerta*, *Gonium pectoral*, *Astrephomene gubernaculifera*, *Pseudocalidococcus azoricus* BACA0444, *Chaetoceros tenuissimus*, *Pseudo-nitzschia multistriata*, *Fragilariopsis cylindrus* CCMP1102, *Fistulifera solaris*, *Fistulifera solaris*, *Cylindrotheca Closterium*, *Seminavis robusta*. For more species homologues information, please contact tech support at tech@phytoab.com.

Application Example



Recom: 2.5 ng, 10 ng and 25 ng recombinant protein containing the peptide for immunization and having a molecular mass of 41 kDa.

Electrophoresis: 12% SDS-PAGE

Transfer: blotting to NC (nitrocellulose) membrane for 1 h.

Blocking: 5% skim milk at RT or 4°C for 1 h.

Primary antibody: 1:1000 dilution overnight at 4°C.

Secondary antibody: 1:10000 dilution using Goat Anti-Rabbit IgG H&L (HRP) (Cat# PHY6000).

Detection: using chemiluminescence substrate and image were captured with CCD camera.