

# Anti-HDA15 antibody

Catalog: PHY1688

## Product Information

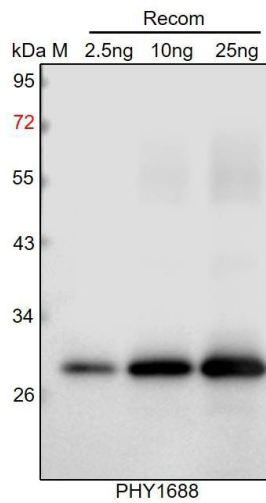
<b>Description:</b>	Rabbit polyclonal antibody
<b>Background:</b>	HDA15 is a class II histone deacetylase. It represses gene expression by removing acetyl groups from core histones. This enzyme forms tetramers, and its activity is regulated by phosphorylation, which influences its oligomerization and subnuclear localization. HDA15 is involved in photomorphogenesis, photosynthesis regulation, and stress responses
<b>Synonyms:</b>	HDA15, ATHDA15, HISTONE DEACETYLASE 15
<b>Immunogen:</b>	Recombinant whole length of HDA15 protein from <i>Arabidopsis thaliana</i> (AT3G18520).
<b>Form:</b>	Lyophilized
<b>Quantity:</b>	150 µg
<b>Purification:</b>	Protein A purified
<b>Reconstitution:</b>	Reconstitution with 150 µl of sterile 1×PBS (PH=7.4) containing 30% glycerol. "Note: please spin tube briefly prior to opening it to avoid any losses that might occur from lyophilized material adhering to the cap or sides of the tube".
<b>Stability &amp; Storage:</b>	Use a manual defrost freezer and avoid repeated freeze-thaw cycles. 12 months from date of receipt, -20 to -70°C as supplied. 6 months, -20 to -70°C under sterile conditions after reconstitution. 1 month, 2 to 8°C under sterile conditions after reconstitution.
<b>Shipping:</b>	The product is shipped at 4°C. Upon receipt, store it immediately at the temperature recommended above.

## Application Information

<b>Recommended Dilution:</b>	Western Blot (1:1000-1:2000) Note: Optimal dilutions/concentrations should be determined by the end user.
<b>Expected / apparent MW:</b>	61 kDa
<b>Predicted Reactivity:</b>	For more species homologues information, please contact tech support at <a href="mailto:tech@phytoab.com">tech@phytoab.com</a> .

Research Use Only

## Application Example



2.5 ng, 10 ng and 25 ng recombinant HDA15 (AA 1-171) protein having a molecular mass of 28 kDa.

**Electrophoresis:** 12 SDS-PAGE

**Transfer:** blotting to NC (nitrocellulose) membrane for 1 h.

**Blocking:** 5% skim milk at RT or 4°C for 1 h.

**Primary antibody:** 1:1000 dilution overnight at 4°C.

**Secondary antibody:** 1:10000 dilution using Goat Anti-Rabbit IgG H&L (HRP) (Cat# PHY6000).

**Detection:** using chemiluminescence substrate and image were captured with CCD camera.