

Anti-DORN1/P2K1/LecRK-I.9 antibody

Catalog: PHY8137A

Product Information

Description:	Rabbit polyclonal antibody
Background:	DORN1/P2K1/LecRK-I.9 is a lectin receptor kinase and the primary plasma membrane receptor for extracellular ATP (eATP). It functions as a damage-associated molecular pattern (DAMP) sensor, binding eATP with high affinity to trigger Ca ²⁺ signaling via CNGC channels, which activates MAPK cascades and jasmonate-mediated immune responses against pathogens and herbivores. DORN1 also plays roles in cell wall adhesion, stomatal regulation, and various stress resistance pathways.
Synonyms:	LECRK-I.9, DOES NOT RESPOND TO NUCLEOTIDES 1, DORN1, L-TYPE LECTIN RECEPTOR KINASE I.9, P2K1
Immunogen:	KLH-conjugated synthetic peptide (16 aa from central section) derived from <i>Arabidopsis thaliana</i> DORN1/P2K1/LecRK-I.9 (AT5G60300).
Form:	Lyophilized
Quantity:	150 µg
Purification:	Immunogen affinity purified
Reconstitution:	Reconstitution with 150 µl of sterile 1XPBS (PH=7.4) containing 30% glycerol. "Note: please spin tube briefly prior to opening it to avoid any losses that might occur from lyophilized material adhering to the cap or sides of the tube".
Stability & Storage:	Use a manual defrost freezer and avoid repeated freeze-thaw cycles. 12 months from date of receipt, -20 to -70°C as supplied. 6 months, -20 to -70°C under sterile conditions after reconstitution. 1 month, 2 to 8°C under sterile conditions after reconstitution.
Shipping:	The product is shipped at 4°C. Upon receipt, store it immediately at the temperature recommended above.

Application Information

Recommended Dilution:	Western Blot (1:1000-1:2000) Note: Optimal dilutions/concentrations should be determined by the end user.
------------------------------	--

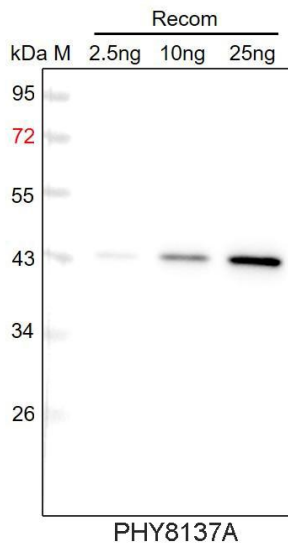
Research Use Only

Expected / apparent MW: 85 kDa

Predicted Reactivity: Among species analyzed, the sequence of the synthetic peptide used for immunization is 94% homologues with the sequence in *Brassica napus*, *Brassica rapa*.

For more species homologues information, please contact tech support at tech@phytoab.com.

Application Example



Recom: 2.5 ng, 10 ng and 25 ng recombinant protein containing the peptide for immunization and having a molecular mass of 43 kDa.

Electrophoresis: 12% SDS-PAGE

Transfer: blotting to NC (nitrocellulose) membrane for 1 h.

Blocking: 5% skim milk at RT or 4°C for 1 h.

Primary antibody: 1:1000 dilution overnight at 4°C.

Secondary antibody: 1:10000 dilution using Goat Anti-Rabbit IgG H&L (HRP) (Cat# PHY6000).

Detection: using chemiluminescence substrate and image were captured with CCD camera.