

Anti-SNRK2.2/3/4/6/9/10 antibody

Catalog: PHY8122S

Product Information

Description:	Rabbit polyclonal antibody
Background:	SNRK2.2/3/4/6/9/10 is a member of SNF1-related protein kinases (SnRK2) whose activity is activated by ionic (salt) or non-ionic (mannitol) osmotic stress.
Synonyms:	SNRK2.2/3/4/6/9/10, ATOST1, OPEN STOMATA1, OST1, P44, SNF1-RELATED PROTEIN KINASE 2.2/3/4/6/9/10, SNRK2-6, SRK2E, SUCROSE NONFERMENTING 1-RELATED PROTEIN KINASE 2-6
Immunogen:	KLH-conjugated synthetic peptide (18 aa from central section) derived from <i>Arabidopsis thaliana</i> SNRK2.2 (AT3G50500), SNRK2.3 (AT5G66880), SNRK2.4 (AT1G10940), SNRK2.6 (AT4G33950), SNRK2.9 (AT2G23030), and SNRK2.10(AT1G60940).
Form:	Lyophilized
Quantity:	150 µg
Purification:	Serum Peptide affinity form antibody available upon request at info@phytoab.com .
Reconstitution:	Reconstitution with 150 µl of sterile water. "Note: please spin tube briefly prior to opening it to avoid any losses that might occur from lyophilized material adhering to the cap or sides of the tube".
Stability & Storage:	Use a manual defrost freezer and avoid repeated freeze-thaw cycles. 12 months from date of receipt, -20 to -70°C as supplied. 6 months, -20 to -70°C under sterile conditions after reconstitution. 1 month, 2 to 8°C under sterile conditions after reconstitution.
Shipping:	The product is shipped at 4°C. Upon receipt, store it immediately at the temperature recommended above.

Application Information

Recommended Dilution:	Western Blot (1:1000-1:2000) Note: Optimal dilutions/concentrations should be determined by the end user.
Expected / apparent MW:	41 kDa

Research Use Only

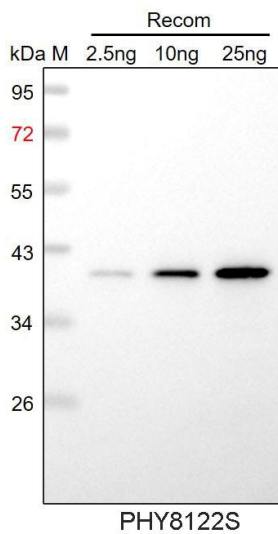
Predicted Reactivity:

Among species analyzed, the sequence of the synthetic peptide used for immunization is 100% homologues with the sequence in *Brassica rapa*, *Brassica napus*, *Hordeum vulgare*, *Vitis vinifera*, *Glycine max*, *Setaria viridis*, *Panicum virgatum*, *Oryza sativa*, *Cucumis sativus*, *Spinacia oleracea*, *Triticum aestivum*, *Medicago truncatula*, *Sorghum bicolor*, *Populus trichocarpa*, *Gossypium raimondii*, *Zea mays*, *Nicotiana tabacum*, *Cucumis sativus*, *Solanum tuberosum*, *Solanum lycopersicum*, *Physcomitrium patens* and 94% homologues with the sequence in *Chlamydomonas reinhardtii*.

The sequence of the synthetic peptide used for immunization is 94% homologues with AT1G78290, AT5G08590, AT5G63650, and 83% with AT4G40010.

For more species homologues information, please contact tech support at tech@phytoab.com.

Application Example



Recom: 2.5 ng, 10 ng and 25 ng recombinant protein containing the peptide for immunization and having a molecular mass of 40 kDa.

Electrophoresis: 12% SDS-PAGE

Transfer: blotting to NC (nitrocellulose) membrane for 1 h.

Blocking: 5% skim milk at RT or 4°C for 1 h.

Primary antibody: 1:1000 dilution overnight at 4°C.

Secondary antibody: 1:10000 dilution using Goat Anti-Rabbit IgG H&L (HRP) (Cat# PHY6000).

Detection: using chemiluminescence substrate and image were captured with CCD camera.