

Anti-OsJAZ9 antibody

Catalog: PHY4680A

Product Information

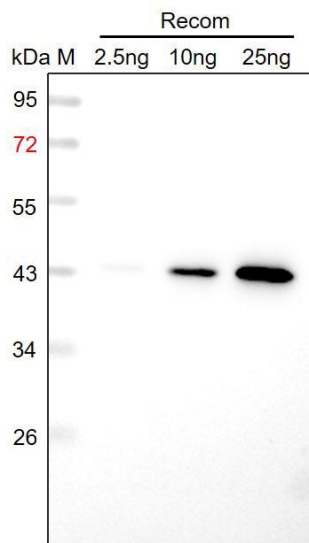
Description:	Rabbit polyclonal antibody
Background:	OsJAZ9 (Os03g0180800) is a transcriptional repressor of jasmonate (JA) signaling. It suppresses JA responses and enhances GA signaling via interacting with SLR1, and contributes to salt, drought, and cold tolerance.
Synonyms:	OsJAZ3, JAZ3, OsJAZ 9, OsJAZ9, Os-JAZ9, JAZ9, OsTIFY11a, OsJAZ6, JAZ6
Immunogen:	KLH-conjugated synthetic peptide (14 aa from central section) derived from <i>Oryza sativa</i> OsJAZ9 (Os03g0180800).
Form:	Lyophilized
Quantity:	150 µg
Purification:	Immunogen affinity purified
Reconstitution:	Reconstitution with 150 µl of sterile 1XPBS (PH=7.4) containing 30% glycerol. "Note: please spin tube briefly prior to opening it to avoid any losses that might occur from lyophilized material adhering to the cap or sides of the tube".
Stability & Storage:	Use a manual defrost freezer and avoid repeated freeze-thaw cycles. 12 months from date of receipt, -20 to -70°C as supplied. 6 months, -20 to -70°C under sterile conditions after reconstitution. 1 month, 2 to 8°C under sterile conditions after reconstitution.
Shipping:	The product is shipped at 4°C. Upon receipt, store it immediately at the temperature recommended above.

Application Information

Recommended Dilution:	Western Blot (1:1000-1:2000) Note: Optimal dilutions/concentrations should be determined by the end user.
Expected / apparent MW:	43 kDa
Predicted Reactivity:	For more species homologues information, please contact tech support at tech@phytoab.com .

Research Use Only

Application Example



PHY4680A

Recom: 2.5 ng, 10 ng and 25 ng recombinant protein containing the peptide for immunization and having a molecular mass of 43 kDa.

Electrophoresis: 12% SDS-PAGE

Transfer: blotting to NC (nitrocellulose) membrane for 1 h.

Blocking: 5% skim milk at RT or 4°C for 1 h.

Primary antibody: 1:1000 dilution overnight at 4°C.

Secondary antibody: 1:10000 dilution using Goat Anti-Rabbit IgG H&L (HRP) (Cat# PHY6000).

Detection: using chemiluminescence substrate and image were captured with CCD camera.