

Anti-ATPMT1/2 antibody

Catalog: PHY7906A

Product Information

Description:	Rabbit polyclonal antibody
Background:	PMT1/2 are phosphoethanolamine N-methyltransferases catalyzing the last two methylation steps of the three sequential methylations of phosphoethanolamine (PEA) that are required for the synthesis of phosphocholine (PCho) in plants..
Synonyms:	XPL1 (XIPOTL 1), DPR2, ATPMT1 (PHOSPHOETHANOLAMINE METHYLTRANSFERASE1), PEAMT, PEAMT1, NMT1 (N-METHYLTRANSFERASE 1), PMEAMT (phosphoethanolamine N-methyltransferase), AtPMEAMT, ATPMT2 (PHOSPHOETHANOLAMINE METHYLTRANSFERASE2)
Immunogen:	KLH-conjugated synthetic peptide (18 aa from central section) derived from <i>Arabidopsis thaliana</i> ATPMT1/2 (AT3G18000, AT1G48600).
Form:	Lyophilized
Quantity:	150 µg
Purification:	Immunogen affinity purified
Reconstitution:	Reconstitution with 150 µl of sterile 1XPBS (PH=7.4) containing 30% glycerol. "Note: please spin tube briefly prior to opening it to avoid any losses that might occur from lyophilized material adhering to the cap or sides of the tube".
Stability & Storage:	Use a manual defrost freezer and avoid repeated freeze-thaw cycles. 12 months from date of receipt, -20 to -70°C as supplied. 6 months, -20 to -70°C under sterile conditions after reconstitution. 1 month, 2 to 8°C under sterile conditions after reconstitution.
Shipping:	The product is shipped at 4°C. Upon receipt, store it immediately at the temperature recommended above.

Application Information

Recommended Dilution:	Western Blot (1:1000-1:2000) Note: Optimal dilutions/concentrations should be determined by the end user.
Expected / apparent MW:	56 kDa

Research Use Only

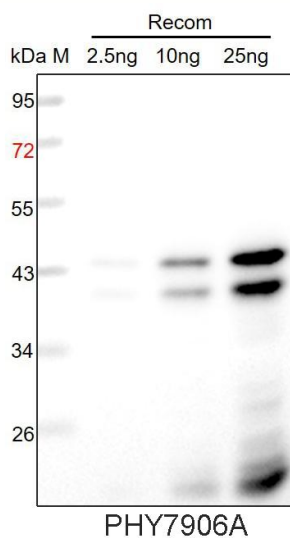
Predicted Reactivity:

Among species analyzed, the sequence of the synthetic peptide used for immunization is 100% homologues with the sequence in *Brassica napus*, *Brassica rapa* and 94% homologues with the sequence in *Zea mays*, *Oryza sativa*, *Hordeum vulgare*, *Glycine max*, *Triticum aestivum*, *Spinacia oleracea*, *Setaria viridis*, *Populus trichocarpa*, *Sorghum bicolor*, *Vitis vinifera*, *Panicum virgatum*, *Cucumis sativus*, *Medicago truncatula*.

The sequence of the synthetic peptide used for immunization is 89% homologues with the sequence in *Arabidopsis thaliana* PMT3 (AT1G73600).

For more species homologues information, please contact tech support at tech@phytoab.com.

Application Example



Recom: 2.5 ng, 10 ng and 25 ng recombinant protein containing the peptide for immunization and having a molecular mass of 44 kDa.

Electrophoresis: 12% SDS-PAGE

Transfer: blotting to NC (nitrocellulose) membrane for 1 h.

Blocking: 5% skim milk at RT or 4°C for 1 h.

Primary antibody: 1:1000 dilution overnight at 4°C.

Secondary antibody: 1:10000 dilution using Goat Anti-Rabbit IgG H&L (HRP) (Cat# PHY6000).

Detection: using chemiluminescence substrate and image were captured with CCD camera.