

# Anti-VTE4/G-TMT antibody

Catalog: PHY2760A

## Product Information

<b>Description:</b>	Rabbit polyclonal antibody
<b>Background:</b>	VTE4/G-TMT is the $\gamma$ -tocopherol methyltransferase, the final enzyme in vitamin E biosynthesis. It specifically methylates $\gamma$ -tocopherol to $\alpha$ -tocopherol, the most active form of vitamin E, and is localized in the chloroplast. Functionally, it is essential for $\alpha$ -tocopherol production, as the <i>vte4</i> mutant accumulates $\gamma$ -tocopherol and exhibits increased oxidative stress under high light or salt conditions.
<b>Synonyms:</b>	VTE4, G-TMT, GAMMA-TOCOPHEROL METHYLTRANSFERASE, TMT1, VITAMIN E DEFICIENT 4
<b>Immunogen:</b>	KLH-conjugated synthetic peptide (14 aa from central section) derived from <i>Arabidopsis thaliana</i> VTE4/G-TMT (AT1G64970).
<b>Form:</b>	Lyophilized
<b>Quantity:</b>	150 $\mu$ g
<b>Purification:</b>	Immunogen affinity purified
<b>Reconstitution:</b>	Reconstitution with 150 $\mu$ l of sterile 1XPBS (PH=7.4) containing 30% glycerol. "Note: please spin tube briefly prior to opening it to avoid any losses that might occur from lyophilized material adhering to the cap or sides of the tube".
<b>Stability &amp; Storage:</b>	Use a manual defrost freezer and avoid repeated freeze-thaw cycles. 12 months from date of receipt, -20 to -70°C as supplied. 6 months, -20 to -70°C under sterile conditions after reconstitution. 1 month, 2 to 8°C under sterile conditions after reconstitution.
<b>Shipping:</b>	The product is shipped at 4°C. Upon receipt, store it immediately at the temperature recommended above.

## Application Information

<b>Recommended Dilution:</b>	Western Blot (1:1000-1:2000) Note: Optimal dilutions/concentrations should be determined by the end user.
<b>Expected / apparent MW:</b>	38 kDa

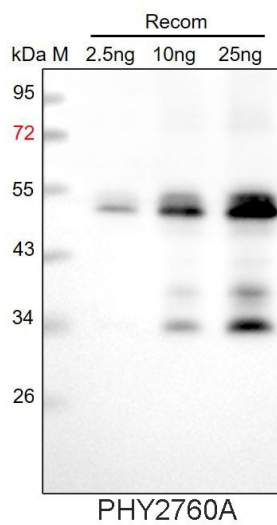
Research Use Only

**Predicted Reactivity:**

Among species analyzed, the sequence of the synthetic peptide used for immunization is 80-99% homologues with the sequence in *Hordeum vulgare*, *Triticum aestivum*, *Nicotiana tabacum*, *Brassica napus*, *Vitis vinifera*, *Brassica rapa*, *Spinacia oleracea*, *Solanum tuberosum*, *Solanum lycopersicum*, *Populus trichocarpa*, *Glycine max*, *Medicago truncatula*, *Gossypium raimondii*.

For more species homologues information, please contact tech support at [tech@phytoab.com](mailto:tech@phytoab.com).

**Application Example**



Recom: 2.5 ng, 10 ng and 25 ng recombinant protein containing the peptide for immunization and having a molecular mass of 52 kDa.

**Electrophoresis:** 12% SDS-PAGE

**Transfer:** blotting to NC (nitrocellulose) membrane for 1 h.

**Blocking:** 5% skim milk at RT or 4°C for 1 h.

**Primary antibody:** 1:1000 dilution overnight at 4°C.

**Secondary antibody:** 1:10000 dilution using Goat Anti-Rabbit IgG H&L (HRP) (Cat# PHY6000).

**Detection:** using chemiluminescence substrate and image were captured with CCD camera.