

Anti-LYK1/CERK1 antibody

Catalog: PHY7172A

Product Information

Description:	Rabbit polyclonal antibody
Background:	LYK1/CERK1 is a plasma membrane LysM receptor-like kinase (RLK) that binds fungal chitin to activate plant innate immunity through phosphorylation cascades.
Synonyms:	LYK1, ATCERK1, ATLYK1, CERK1, CHITIN ELICITOR RECEPTOR KINASE 1, LYSM DOMAIN RECEPTOR-LIKE KINASE 1, LYSM RLK1, LYSM-CONTAINING RECEPTOR-LIKE KINASE 1
Immunogen:	KLH-conjugated synthetic peptide (17 aa from central section) derived from <i>Arabidopsis thaliana</i> LYK1/CERK1 (AT3G21630).
Form:	Lyophilized
Quantity:	150 µg
Purification:	Immunogen affinity purified
Reconstitution:	Reconstitution with 150 µl of sterile 1XPBS (PH=7.4) containing 30% glycerol. "Note: please spin tube briefly prior to opening it to avoid any losses that might occur from lyophilized material adhering to the cap or sides of the tube".
Stability & Storage:	Use a manual defrost freezer and avoid repeated freeze-thaw cycles. 12 months from date of receipt, -20 to -70°C as supplied. 6 months, -20 to -70°C under sterile conditions after reconstitution. 1 month, 2 to 8°C under sterile conditions after reconstitution.
Shipping:	The product is shipped at 4°C. Upon receipt, store it immediately at the temperature recommended above.

Application Information

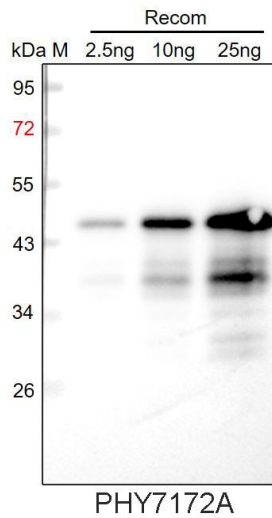
Recommended Dilution:	Western Blot (1:1000-1:2000) Note: Optimal dilutions/concentrations should be determined by the end user.
Expected / apparent MW:	67 kDa
Predicted Reactivity:	Among species analyzed, the sequence of the synthetic peptide used for immunization is 88-94% homologues with the sequence in

Research Use Only

Brassica napus, Brassica rapa, Solanum tuberosum, Gossypium raimondii, Vitis vinifera, Physcomitrium patens, Nicotiana tabacum, Cucumis sativus, Solanum lycopersicum, Populus trichocarpa, Cucumis sativus, Medicago truncatula.

For more species homologues information, please contact tech support at tech@phytoab.com.

Application Example



Recom: 2.5 ng, 10 ng and 25 ng recombinant protein containing the peptide for immunization and having a molecular mass of 45 kDa.

Electrophoresis: 12% SDS-PAGE

Transfer: blotting to NC (nitrocellulose) membrane for 1 h.

Blocking: 5% skim milk at RT or 4°C for 1 h.

Primary antibody: 1:1000 dilution overnight at 4°C.

Secondary antibody: 1:10000 dilution using Goat Anti-Rabbit IgG H&L (HRP) (Cat# PHY6000).

Detection: using chemiluminescence substrate and image were captured with CCD camera.