

Anti-HSP70 antibody

Catalog: PHY3419A

Product Information

Description:	Rabbit polyclonal antibody
Background:	HSP70s are conserved molecular chaperones that assist in protein folding, translocation, and degradation. In Arabidopsis, they are crucial for maintaining cellular homeostasis and enhancing tolerance to heat and other abiotic stresses.
Synonyms:	ARABIDOPSIS THALIANA HEAT SHOCK COGNATE PROTEIN 70, AT-HSC70-1, ATHSP70, HEAT SHOCK COGNATE PROTEIN 70, HEAT SHOCK COGNATE PROTEIN 70-1, HEAT SHOCK PROTEIN 70-1, HSC70, HSC70-1, HSP70-1
Immunogen:	KLH-conjugated synthetic peptide (15 aa from central section) derived from <i>Arabidopsis thaliana</i> HSP70-1 (AT5G02500), HSP70-3 (AT3G09440), HSP70-4 (AT3G12580).
Form:	Lyophilized
Quantity:	150 µg
Purification:	Immunogen affinity purified
Reconstitution:	Reconstitution with 150 µl of sterile 1XPBS (PH=7.4) containing 30% glycerol. "Note: please spin tube briefly prior to opening it to avoid any losses that might occur from lyophilized material adhering to the cap or sides of the tube".
Stability & Storage:	Use a manual defrost freezer and avoid repeated freeze-thaw cycles. 12 months from date of receipt, -20 to -70°C as supplied. 6 months, -20 to -70°C under sterile conditions after reconstitution. 1 month, 2 to 8°C under sterile conditions after reconstitution.
Shipping:	The product is shipped at 4°C. Upon receipt, store it immediately at the temperature recommended above.

Application Information

Recommended Dilution:	Western Blot (1:1000-1:2000) Note: Optimal dilutions/concentrations should be determined by the end user.
Expected / apparent MW:	70 kDa

Research Use Only

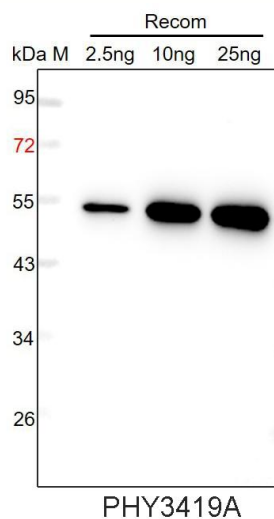
Predicted Reactivity:

Among species analyzed, the sequence of the synthetic peptide used for immunization is 100% homologues with the sequence in *Brassica napus*, *Brassica rapa*, *Brassica cretica*, *Gossypium raimondii*, *Gossypium barbadense*, *Nicotiana tabacum*, *Sorghum bicolor*, *Triticum aestivum*, *Zea mays*, *Solanum lycopersicum*, *Solanum tuberosum*, *Solanum demissum*, *Oryza sativa*.

The sequence of the synthetic peptide used for immunization is 93% homologues with the sequence in HSP70-2 (AT5G02490), and 87% homologues with the sequence in HSP70T-1 (AT1G56410), and 93% homologues with the sequence in HSP70-5/ HSP70b (AT1G16030).

For more species homologues information, please contact tech support at tech@phytoab.com.

Application Example



Recom: 2.5 ng, 10 ng and 25 ng recombinant protein containing the peptide for immunization and having a molecular mass of 54 kDa.

Electrophoresis: 12% SDS-PAGE

Transfer: blotting to NC (nitrocellulose) membrane for 1 h.

Blocking: 5% skim milk at RT or 4°C for 1 h.

Primary antibody: 1:1000 dilution overnight at 4°C.

Secondary antibody: 1:10000 dilution using Goat Anti-Rabbit IgG H&L (HRP) (Cat# PHY6000).

Detection: using chemiluminescence substrate and image were captured with CCD camera.