

Anti-HSP70, C-terminal antibody

Catalog: PHY3420A

Product Information

Description:	Rabbit polyclonal antibody
Background:	HSP70s are conserved molecular chaperones that assist in protein folding, translocation, and degradation. In <i>Arabidopsis</i> , they are crucial for maintaining cellular homeostasis and enhancing tolerance to heat and other abiotic stresses.
Synonyms:	ARABIDOPSIS THALIANA HEAT SHOCK COGNATE PROTEIN 70, AT-HSC70-1, ATHSP70, HEAT SHOCK COGNATE PROTEIN 70, HEAT SHOCK COGNATE PROTEIN 70-1, HEAT SHOCK PROTEIN 70-1, HSC70, HSC70-1, HSP70-1
Immunogen:	KLH-conjugated synthetic peptide (15 aa from C terminal section) derived from <i>Arabidopsis thaliana</i> HSP70-1 (AT5G02500), HSP70-3 (AT3G09440), HSP70-4 (AT3G12580).
Form:	Lyophilized
Quantity:	150 µg
Purification:	Immunogen affinity purified
Reconstitution:	Reconstitution with 150 µl of sterile 1XPBS (PH=7.4) containing 30% glycerol. "Note: please spin tube briefly prior to opening it to avoid any losses that might occur from lyophilized material adhering to the cap or sides of the tube".
Stability & Storage:	Use a manual defrost freezer and avoid repeated freeze-thaw cycles. 12 months from date of receipt, -20 to -70°C as supplied. 6 months, -20 to -70°C under sterile conditions after reconstitution. 1 month, 2 to 8°C under sterile conditions after reconstitution.
Shipping:	The product is shipped at 4°C. Upon receipt, store it immediately at the temperature recommended above.

Application Information

Recommended Dilution:	Western Blot (1:1000-1:2000) Note: Optimal dilutions/concentrations should be determined by the end user.
Expected / apparent MW:	70 kDa

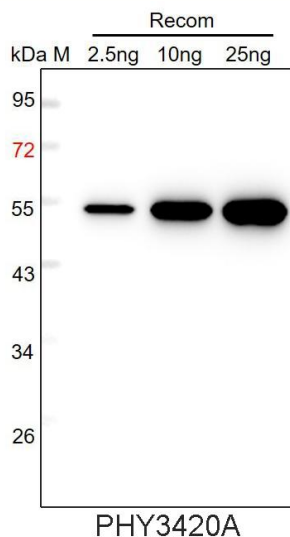
Research Use Only

Predicted Reactivity:

Among species analyzed, the sequence of the synthetic peptide used for immunization is 100% homologues with the sequence in *Brassica napus*, *Brassica rapa*, *Glycine max*, *Medicago truncatula*, *Panicum virgatum*, *Sorghum bicolor*, *Spinacia oleracea*, *Triticum aestivum*, *Vitis vinifera*, *Zea mays*, *Oryza sativa*, *Solanum tuberosum*, *Gossypium raimondii*.

The sequence of the synthetic peptide used for immunization is 93% homologues with the sequence in HSP70-2 (AT5G02490), and 87% homologues with the sequence in HSP70T-1 (AT1G56410), and 80% homologues with the sequence in HSP70-5/ HSP70b (AT1G16030). For more species homologues information, please contact tech support at tech@phytoab.com.

Application Example



Recom: 2.5 ng, 10 ng and 25 ng recombinant protein containing the peptide for immunization and having a molecular mass of 54 kDa.

Electrophoresis: 12% SDS-PAGE

Transfer: blotting to NC (nitrocellulose) membrane for 1 h.

Blocking: 5% skim milk at RT or 4°C for 1 h.

Primary antibody: 1:1000 dilution overnight at 4°C.

Secondary antibody: 1:10000 dilution using Goat Anti-Rabbit IgG H&L (HRP) (Cat# PHY6000).

Detection: using chemiluminescence substrate and image were captured with CCD camera.