

Anti-OsATG8A antibody

Catalog: PHY4673S

Product Information

Description:	Rabbit polyclonal antibody
Background:	ATG8A/B/C are ubiquitin-like proteins essential for autophagosome formation and cargo recruitment. They conjugate with phosphatidylethanolamine (PE) to anchor on autophagosomal membranes, facilitating membrane expansion, substrate recognition (via LIR motifs), and selective degradation of damaged organelles/pathogens. ATG8 isoforms also regulate autophagosome-lysosome fusion and modulate stress responses (e.g., ER/mitochondrial quality control).
Synonyms:	ATG8A/B/C, OsATG8a/b/c
Immunogen:	KLH-conjugated synthetic peptide (16 aa from N terminal section) derived from <i>Oryza sativa</i> OsATG8A (Os07g0512200).
Form:	Lyophilized
Quantity:	150 µg
Purification:	Serum Peptide affinity form antibody available upon request at info@phytoab.com .
Reconstitution:	Reconstitution with 150 µl of sterile water. "Note: please spin tube briefly prior to opening it to avoid any losses that might occur from lyophilized material adhering to the cap or sides of the tube".
Stability & Storage:	Use a manual defrost freezer and avoid repeated freeze-thaw cycles. 12 months from date of receipt, -20 to -70°C as supplied. 6 months, -20 to -70°C under sterile conditions after reconstitution. 1 month, 2 to 8°C under sterile conditions after reconstitution.
Shipping:	The product is shipped at 4°C. Upon receipt, store it immediately at the temperature recommended above.

Application Information

Recommended Dilution:	Western Blot (1:1000-1:2000) Note: Optimal dilutions/concentrations should be determined by the end user.
Expected / apparent MW:	14 kDa

Research Use Only

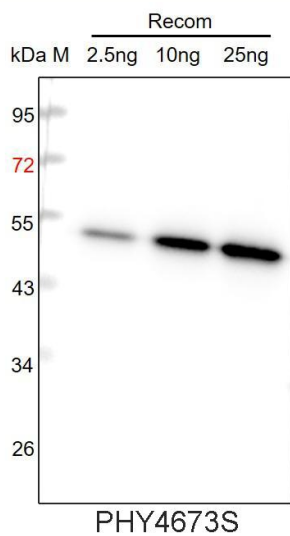
Predicted Reactivity:

Among species analyzed, the sequence of the synthetic peptide used for immunization is 93% homologues with the sequence in *Vitis vinifera*, *Setaria viridis*, *Sorghum bicolor*.

The sequence of the synthetic peptide used for immunization is 93% homologues with the sequence in ATG8C (Os08g0191600).

For more species homologues information, please contact tech support at tech@phytoab.com.

Application Example



Recom: 2.5 ng, 10 ng and 25 ng recombinant protein containing the peptide for immunization and having a molecular mass of 53 kDa.

Electrophoresis: 12% SDS-PAGE

Transfer: blotting to NC (nitrocellulose) membrane for 1 h.

Blocking: 5% skim milk at RT or 4°C for 1 h.

Primary antibody: 1:1000 dilution overnight at 4°C.

Secondary antibody: 1:10000 dilution using Goat Anti-Rabbit IgG H&L (HRP) (Cat# PHY6000).

Detection: using chemiluminescence substrate and image were captured with CCD camera.