

Anti-VAB1/3 antibody

Catalog: PHY2368S

Product Information

Description:	Rabbit polyclonal antibody
Background:	VAB1 is a vacuolar ATP synthase subunit B1 that localizes to the nucleus and specifically interacts with the product of hexokinase 1 (ATHXK1). VAB3 is a vacuolar ATP synthase subunit B1 that binds to and co-localizes with F-actin, bundling and stabilizing actin filaments.
Synonyms:	VAB1, V-ATPASE B SUBUNIT 1, ATVAB1, VAB3, V-ATPASE B SUBUNIT 3, ATVAB3
Immunogen:	KLH-conjugated synthetic peptide (14 aa from central section) derived from <i>Arabidopsis thaliana</i> VAB1 and VAB3 (AT1G76030, AT1G20260).
Form:	Lyophilized
Quantity:	150 µg
Purification:	Serum Peptide affinity form antibody available upon request at info@phytoab.com .
Reconstitution:	Reconstitution with 150 µl of sterile water. "Note: please spin tube briefly prior to opening it to avoid any losses that might occur from lyophilized material adhering to the cap or sides of the tube".
Stability & Storage:	Use a manual defrost freezer and avoid repeated freeze-thaw cycles. 12 months from date of receipt, -20 to -70°C as supplied. 6 months, -20 to -70°C under sterile conditions after reconstitution. 1 month, 2 to 8°C under sterile conditions after reconstitution.
Shipping:	The product is shipped at 4°C. Upon receipt, store it immediately at the temperature recommended above.

Application Information

Recommended Dilution:	Western Blot (1:1000-1:2000) Note: Optimal dilutions/concentrations should be determined by the end user.
Expected / apparent MW:	54 kDa
Predicted Reactivity:	Among species analyzed, the sequence of the synthetic peptide used

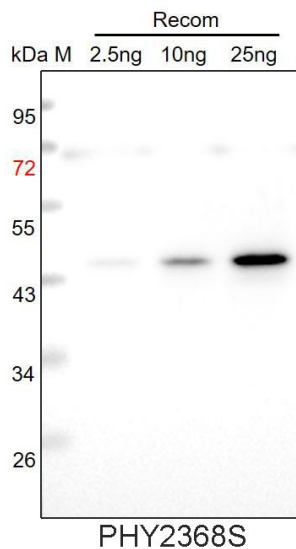
Research Use Only

for immunization is 100% homologues with the sequence in *Glycine max*, *Chlamydomonas reinhardtii*, *Brassica napus*, *Brassica rapa*, *Populus trichocarpa*, *Medicago truncatula*, *Solanum tuberosum*, and 93% homologues with the sequence in *Triticum aestivum*, *Hordeum vulgare*, *Nicotiana tabacum*, *Oryza sativa*, *Zea mays*, *Setaria viridis*, *Solanum lycopersicum*, *Physcomitrium patens*, *Spinacia oleracea*.

The sequence of the synthetic peptide used for immunization is 93% homologues with the sequence in VAB2 (AT4G38510).

For more species homologues information, please contact tech support at tech@phytoab.com.

Application Example



Recom: 2.5 ng, 10 ng and 25 ng recombinant protein containing the peptide for immunization and having a molecular mass of 45 kDa.

Electrophoresis: 12% SDS-PAGE

Transfer: blotting to NC (nitrocellulose) membrane for 1 h.

Blocking: 5% skim milk at RT or 4°C for 1 h.

Primary antibody: 1:1000 dilution overnight at 4°C.

Secondary antibody: 1:10000 dilution using Goat Anti-Rabbit IgG H&L (HRP) (Cat# PHY6000).

Detection: using chemiluminescence substrate and image were captured with CCD camera.