

# Anti-ATG8A/B antibody

Catalog: PHY8134S

## Product Information

<b>Description:</b>	Rabbit polyclonal antibody
<b>Background:</b>	ATG8 are ubiquitin-like proteins essential for autophagosome formation and cargo recruitment. They conjugate with phosphatidylethanolamine (PE) to anchor on autophagosomal membranes, facilitating membrane expansion, substrate recognition (via LIR motifs), and selective degradation of damaged organelles/pathogens. ATG8 isoforms also regulate autophagosome-lysosome fusion and modulate stress responses (e.g., ER/mitochondrial quality control).
<b>Synonyms:</b>	ATG8A/B, ATG8, APG8, AUTOPHAGY 8, AUTOPHAGY-RELATED 8
<b>Immunogen:</b>	KLH-conjugated synthetic peptide (15 aa from C terminal section) derived from <i>Arabidopsis thaliana</i> ATG8A/B (AT4G21980/AT4G04620).
<b>Form:</b>	Lyophilized
<b>Quantity:</b>	150 µg
<b>Purification:</b>	Serum Peptide affinity form antibody available upon request at <a href="mailto:info@phytoab.com">info@phytoab.com</a> .
<b>Reconstitution:</b>	Reconstitution with 150 µl of sterile water. "Note: please spin tube briefly prior to opening it to avoid any losses that might occur from lyophilized material adhering to the cap or sides of the tube".
<b>Stability &amp; Storage:</b>	Use a manual defrost freezer and avoid repeated freeze-thaw cycles. 12 months from date of receipt, -20 to -70°C as supplied. 6 months, -20 to -70°C under sterile conditions after reconstitution. 1 month, 2 to 8°C under sterile conditions after reconstitution.
<b>Shipping:</b>	The product is shipped at 4°C. Upon receipt, store it immediately at the temperature recommended above.

## Application Information

<b>Recommended Dilution:</b>	Western Blot (1:1000-1:2000) Note: Optimal dilutions/concentrations should be determined by the end user.
<b>Expected / apparent MW:</b>	15 kDa

Research Use Only

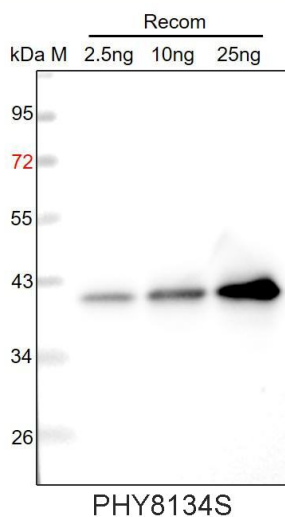
### Predicted Reactivity:

Among species analyzed, the sequence of the synthetic peptide used for immunization is 100% homologues with the sequence in *Solanum tuberosum*, *Brassica rapa*, *Brassica napus*, *Solanum lycopersicum*, *Medicago truncatula*, *Spinacia oleracea*, *Nicotiana tabacum*, and 93% homologues with the sequence in *Zea mays*, *Hordeum vulgare*, *Gossypium raimondii*, *Vitis vinifera*, *Glycine max*, *Populus trichocarpa*, *Setaria viridis*, *Oryza sativa*, *Panicum virgatum*, *Sorghum bicolor*, *Triticum aestivum*, *Cucumis sativus*, *Physcomitrium patens*.

The sequence of the synthetic peptide used for immunization is 93% homologues with the sequence in ATG8C (AT1G62040) and ATG8D (AT2G05630).

For more species homologues information, please contact tech support at [tech@phytoab.com](mailto:tech@phytoab.com).

### Application Example



Recom: 2.5 ng, 10 ng and 25 ng recombinant protein containing the peptide for immunization and having a molecular mass of 43 kDa.

**Electrophoresis:** 12% SDS-PAGE

**Transfer:** blotting to NC (nitrocellulose) membrane for 1 h.

**Blocking:** 5% skim milk at RT or 4°C for 1 h.

**Primary antibody:** 1:1000 dilution overnight at 4°C.

**Secondary antibody:** 1:10000 dilution using Goat Anti-Rabbit IgG H&L (HRP) (Cat# PHY6000).

**Detection:** using chemiluminescence substrate and image were captured with CCD camera.