

# Anti-NAD4 antibody

Catalog: PHY1075S

## Product Information

|                                 |  |
|---------------------------------|--|
| <b>Description:</b>             | Rabbit polyclonal antibody   |
| <b>Background:</b>              | Complex I is the largest protein complex of the oxidative phosphorylation system in mitochondrial and it catalyzes NADH-quinone oxidoreduction. Complex I represents the main entrance site for electrons into the respiratory electron transfer chain. In <i>Arabidopsis</i> , Complex I have at least 49 subunits and NAD4 (ATMG00580) is one of the subunits. |
| <b>Synonyms:</b>                | NAD4, NADH DEHYDROGENASE SUBUNIT 4   |
| <b>Immunogen:</b>               | KLH-conjugated synthetic peptide (12 aa from central section) derived from <i>Arabidopsis thaliana</i> NAD4 (ATMG00580).   |
| <b>Form:</b>                    | Lyophilized  |
| <b>Quantity:</b>                | 150 µg   |
| <b>Purification:</b>            | Serum<br>Peptide affinity form antibody available upon request at <a href="mailto:info@phytoab.com">info@phytoab.com</a> .   |
| <b>Reconstitution:</b>          | Reconstitution with 150 µl of sterile water.<br>"Note: please spin tube briefly prior to opening it to avoid any losses that might occur from lyophilized material adhering to the cap or sides of the tube".  |
| <b>Stability &amp; Storage:</b> | Use a manual defrost freezer and avoid repeated freeze-thaw cycles.<br>12 months from date of receipt, -20 to -70°C as supplied.<br>6 months, -20 to -70°C under sterile conditions after reconstitution.<br>1 month, 2 to 8°C under sterile conditions after reconstitution.  |
| <b>Shipping:</b>                | The product is shipped at 4°C. Upon receipt, store it immediately at the temperature recommended above.  |

## Application Information

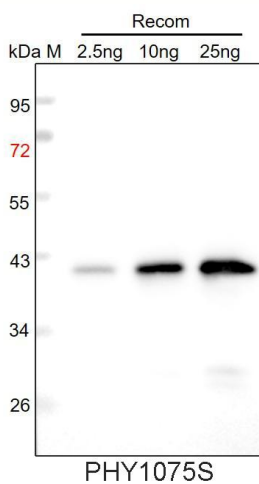
|                                |  |
|--------------------------------|--|
| <b>Recommended Dilution:</b>   | Western Blot (1:1000-1:2000)<br>Note: Optimal dilutions/concentrations should be determined by the end user. |
| <b>Expected / apparent MW:</b> | 55/43 kDa  |
| <b>Predicted Reactivity:</b>   | Among 25 analyzed species, the sequence of the synthetic peptide   |

Research Use Only

used for immunization is 100% homologues with the sequence in *Medicago truncatula*, *Brassica napus*, *Nicotiana tabacum*, *Brassica rapa subsp. oleifera*, *Gossypium raimondii*, *Vitis vinifera*, *Glycine max*, *Triticumaestivum*, *Cucumis sativus*, *Sorghum bicolor*, *Zea mays subsp. mays*, *Oryza sativa Indica Group*, *Oryza sativa Japonica Group*, *Brassica rapa subsp. chinensis*, and 80-99% homologues with the sequence in *Physcomitrella patens*.

For more species homologues information, please contact tech support at [tech@phytoab.com](mailto:tech@phytoab.com).

## Application Example



Recom: 2.5 ng, 10 ng and 25 ng recombinant protein containing the peptide for immunization and having a molecular mass of 42 kDa.

**Electrophoresis:** 12% SDS-PAGE

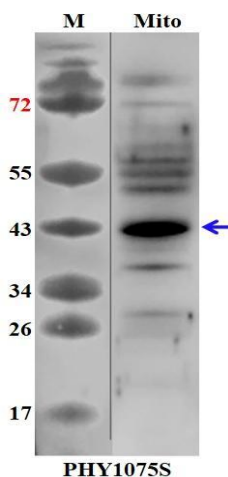
**Transfer:** blotting to NC (nitrocellulose) membrane for 1 h.

**Blocking:** 5% skim milk at RT or 4°C for 1 h.

**Primary antibody:** 1:1000 dilution overnight at 4°C.

**Secondary antibody:** 1:10000 dilution using Goat Anti-Rabbit IgG H&L (HRP) (Cat# PHY6000).

**Detection:** using chemiluminescence substrate and image were captured with CCD camera.



10 µg mitochondria protein from *Arabidopsis thaliana* leaf.

**Electrophoresis:** 15% SDS-Urea-PAGE

**Transfer:** blotting to NC (nitrocellulose) membrane for 1 h.

**Blocking:** 5% skim milk at RT or 4°C for 1 h.

**Primary antibody:** 1:1000 dilution overnight at 4°C.

**Secondary antibody:** 1:10000 dilution using Goat Anti-Rabbit IgG H&L(HRP) (Cat# PHY6000).

**Detection:** using chemiluminescence substrate and image were captured with CCD camera.