

# Anti-Os03g0285800/OsMPK3 antibody

Catalog: PHY4684S

## Product Information

|                                 |                                                                                                                                                                                                                                                                               |
|---------------------------------|-------------------------------------------------------------------------------------------------------------------------------------------------------------------------------------------------------------------------------------------------------------------------------|
| <b>Description:</b>             | Rabbit polyclonal antibody                                                                                                                                                                                                                                                    |
| <b>Background:</b>              | OsMPK3 (Os03g0285800) is a TEY-type mitogen-activated protein kinase that positively regulates JA-mediated insect resistance, salt and cold tolerance, and controls plant architecture by phosphorylating KRP3 to modulate cell division.                                     |
| <b>Synonyms:</b>                | OsMSRMK2, OsMAPK5, OsMAP1, OsMPK3, OsBIMK1, OsMAPK2, MPK5, BIMK1, MAPK2, MAPK5, MPK3, OsMPK5, OsMAPK3, OsMAPK5b, MAPK3                                                                                                                                                        |
| <b>Immunogen:</b>               | KLH-conjugated synthetic peptide (15 aa from C terminal section) derived from <i>Oryza sativa</i> OsMPK3 (Os03g0285800).                                                                                                                                                      |
| <b>Form:</b>                    | Lyophilized                                                                                                                                                                                                                                                                   |
| <b>Quantity:</b>                | 150 µg                                                                                                                                                                                                                                                                        |
| <b>Purification:</b>            | Serum<br>Peptide affinity form antibody available upon request at <a href="mailto:info@phytoab.com">info@phytoab.com</a> .                                                                                                                                                    |
| <b>Reconstitution:</b>          | Reconstitution with 150 µl of sterile water.<br>"Note: please spin tube briefly prior to opening it to avoid any losses that might occur from lyophilized material adhering to the cap or sides of the tube".                                                                 |
| <b>Stability &amp; Storage:</b> | Use a manual defrost freezer and avoid repeated freeze-thaw cycles.<br>12 months from date of receipt, -20 to -70°C as supplied.<br>6 months, -20 to -70°C under sterile conditions after reconstitution.<br>1 month, 2 to 8°C under sterile conditions after reconstitution. |
| <b>Shipping:</b>                | The product is shipped at 4°C. Upon receipt, store it immediately at the temperature recommended above.                                                                                                                                                                       |

## Application Information

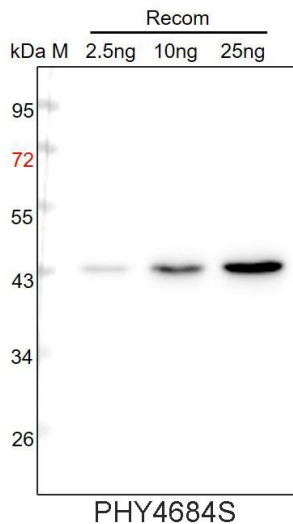
|                                |                                                                                                                                            |
|--------------------------------|--------------------------------------------------------------------------------------------------------------------------------------------|
| <b>Recommended Dilution:</b>   | Western Blot (1:1000-1:2000)<br>Note: Optimal dilutions/concentrations should be determined by the end user.                               |
| <b>Expected / apparent MW:</b> | 43 kDa                                                                                                                                     |
| <b>Predicted Reactivity:</b>   | Among species analyzed, the sequence of the synthetic peptide used for immunization is 100% homologues with the sequence in <i>Panicum</i> |

Research Use Only

*virgatum*, *Setaria viridis*, and 93% homologues with the sequence in *Sorghum bicolor*, *Gossypium raimondii*, *Cucumis sativus*.

For more species homologues information, please contact tech support at [tech@phytoab.com](mailto:tech@phytoab.com).

## Application Example



Recom: 2.5 ng, 10 ng and 25 ng recombinant protein containing the peptide for immunization and having a molecular mass of 43 kDa.

**Electrophoresis:** 12% SDS-PAGE

**Transfer:** blotting to NC (nitrocellulose) membrane for 1 h.

**Blocking:** 5% skim milk at RT or 4°C for 1 h.

**Primary antibody:** 1:1000 dilution overnight at 4°C.

**Secondary antibody:** 1:10000 dilution using Goat Anti-Rabbit IgG H&L (HRP) (Cat# PHY6000).

**Detection:** using chemiluminescence substrate and image were captured with CCD camera.