

Anti-PSBTN Antibody

Catalog: PHY3369A

Product Information

Description:	Rabbit polyclonal antibody
Background:	PSBTN/PSII-T is a luminal 3-kDa subunit of Photosystem II. As a nuclear-encoded component of the oxygen-evolving complex, it is essential for light acclimation and photoprotection, but not for PSII assembly or stability.
Synonyms:	PSBTN, PHOTOSYSTEM II SUBUNIT T
Immunogen:	KLH-conjugated synthetic peptide (15 aa from C terminal section) derived from <i>Arabidopsis thaliana</i> PSBTN (AT3G21055).
Form:	Lyophilized
Quantity:	150 µg
Purification:	Immunogen affinity purified
Reconstitution:	Reconstitution with 150 µl of sterile 1XPBS (PH=7.4) containing 30% glycerol. "Note: please spin tube briefly prior to opening it to avoid any losses that might occur from lyophilized material adhering to the cap or sides of the tube".
Stability & Storage:	Use a manual defrost freezer and avoid repeated freeze-thaw cycles. 12 months from date of receipt, -20 to -70°C as supplied. 6 months, -20 to -70°C under sterile conditions after reconstitution. 1 month, 2 to 8°C under sterile conditions after reconstitution.
Shipping:	The product is shipped at 4°C. Upon receipt, store it immediately at the temperature recommended above.

Application Information

Recommended Dilution:	Western Blot (1:1000-1:2000) Note: Optimal dilutions/concentrations should be determined by the end user.
Expected / apparent MW:	11 kDa/5 kDa
Predicted Reactivity:	Among species analyzed, the sequence of the synthetic peptide used for immunization is 100% homologues with the sequence in <i>Brassica napus</i> , <i>Brassica rapa</i> , and 80-99% homologues with the sequence in <i>Gossypium raimondii</i> , <i>Medicago truncatula</i> , <i>Nicotiana tabacum</i> ,

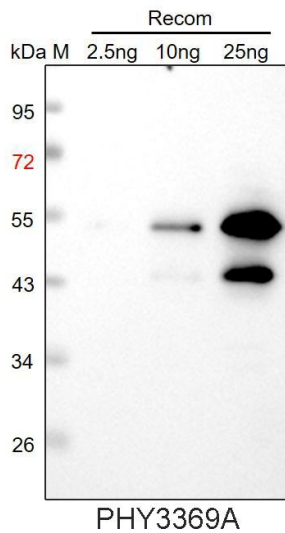
Research Use Only

Spinacia oleracea, *Glycine max*.

The sequence of the synthetic peptide used for immunization is 93% (14 / 15) homologues with the sequence in AT1G51400.

For more species homologues information, please contact tech support at tech@phytoab.com.

Application Example



Recom: 2.5 ng, 10 ng and 25 ng recombinant protein containing the peptide for immunization and having a molecular mass of 52 kDa.

Electrophoresis: 12% SDS-PAGE

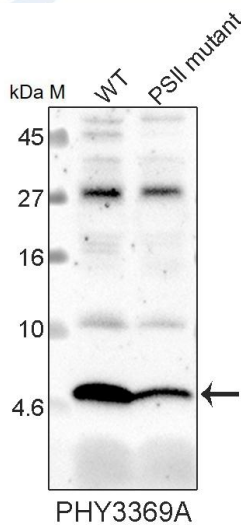
Transfer: blotting to NC (nitrocellulose) membrane for 1 h.

Blocking: 5% skim milk at RT or 4°C for 1 h.

Primary antibody: 1:1000 dilution overnight at 4°C.

Secondary antibody: 1:10000 dilution using Goat Anti-Rabbit IgG H&L (HRP) (Cat# PHY6000).

Detection: using chemiluminescence substrate and image were captured with CCD camera.



Thylakoid membrane protein from WT and a PSII mutant of *Arabidopsis thaliana* leaf containing 2.5 µg of chlorophyll.

Electrophoresis: 16% Tricine-SDS-PAGE

Transfer: blotting to NC (nitrocellulose) membrane for 1 h.

Blocking: 5% skim milk at RT or 4°C for 1 h.

Primary antibody: 1:2000 dilution overnight at 4°C.

Secondary antibody: 1:10000 dilution using Goat Anti-Rabbit IgG H&L(HRP) (Cat# PHY6000).

Detection: using chemiluminescence substrate and image were captured with CCD camera.