

Anti-CP4-EPSPS antibody

Catalog: NAB1004-001S

Quantity: 200 µL

Immunogen Information:

Background

5-enolpyruvylshikimate-3-phosphate (EPSP) synthase is an enzyme produced by plants and microorganisms. It is the biological target of the herbicide glyphosate, and a glyphosate-resistant version of this gene has been used in genetically modified crops.

Immunogen

KLH-conjugated synthetic peptide (17 aa from central section) derived from *Glycine max* (cp4epsps) (Uniprot: Q587N9; NCBI: AII80555). [We also have antibodies for different epitopes from the Capsid protein. Please request at \[info@nanodiaincs.com\]\(mailto:info@nanodiaincs.com\) or <https://www.nanodiaincs.com>.](#)

Basic Information:

Purification: Serum

Clonality: Polyclonal

Expected MW: 55 kDa

Host: Rabbit

Product Information:

Form: Lyophilized

Reconstitution

Reconstitution with 200 µL of sterile water.

"Note: please spin tube briefly prior to opening it to avoid any losses that might occur from lyophilized material adhering to the cap or sides of the tube".

Stability & Storage

Use a manual defrost freezer and avoid repeated freeze-thaw cycles.

12 months from date of receipt, -20 to -70°C as supplied.

6 months, -20 to -70°C under sterile conditions after reconstitution.

1 month, 2 to 8°C under sterile conditions after reconstitution.

Shipping

The product is shipped at 4°C. Upon receipt, store it immediately at the temperature recommended above.

Applications Information:

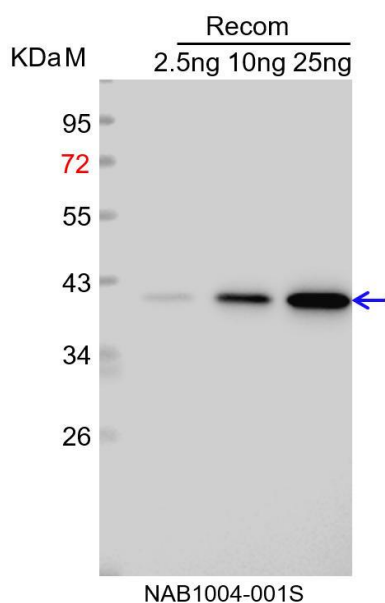
Recommended Dilution: WB (1:1000-1:2000)

Predicted Reactivity: The sequence of the synthetic peptide used for immunization is 100% homologous with the sequence in *Agrobacterium sp. (strain CP4)*, *Sinorhizobium mexicanum*, *Shinella sediment*, *Sinorhizobium chiapasense*, *Shinella oryzae*, *Shinella fusca*, *Shinella sumterensis*, *Shinella lacus*,

Shinella kummerowiae, *Neorhizobium alkalisoli*, *Rhizobium alvei*, *Sinorhizobium psoraleae*, and 93% homologues with the sequence in *Rhizobium meliloti* (strain 1021), *Sinorhizobium saheli*, *Sinorhizobium kummerowiae*, *Pseudorhizobium tarimense*.

For more species homologues information, please contact tech support at info@nanodiaincs.com.

Example



Recom: 2.5 ng, 10 ng and 25 ng recombinant protein containing the peptide for immunization and having a molecular mass of 41 kDa.

Electrophoresis: 12% SDS-PAGE

Transfer: blotting to NC (nitrocellulose) membrane for 1 h.

Blocking: 5% skim milk at RT or 4°C for 1 h.

Primary antibody: 1:1000 dilution overnight at 4°C.

Secondary antibody: 1:10000 dilution using Goat Anti-Rabbit IgG H&L (HRP) (Cat# PHY6000).

Detection: using chemiluminescence substrate and image were captured with CCD camera.