

# Anti-Heat shock protein 81-2 antibody

Catalog: PHY0503

## Product Information

|                                 |   |
|---------------------------------|---|
| <b>Description:</b>             | Mouse monoclonal antibody   |
| <b>Background:</b>              | Hsp82 (heat shock protein 82) is a chaperone protein that assists other proteins to fold properly, stabilizes proteins against heat stress, and aids in protein degradation.  |
| <b>Synonyms:</b>                | HSP82, HSP81-2  |
| <b>Immunogen:</b>               | Recombinant protein HSP90 derived from <i>Oryza sativa</i> (Os09g0482100), which shows more than 90% identity with <i>Arabidopsis thaliana</i> HSP90 proteins (AT5G56030, AT5G56010, AT5G56000, AT5G52640).   |
| <b>Form:</b>                    | Lyophilized   |
| <b>Quantity:</b>                | 150 µg  |
| <b>Purification:</b>            | Protein A purified  |
| <b>Reconstitution:</b>          | Reconstitution with 150 µl of sterile 1XPBS (PH=7.4) containing 30% glycerol.<br>"Note: please spin tube briefly prior to opening it to avoid any losses that might occur from lyophilized material adhering to the cap or sides of the tube".                                |
| <b>Stability &amp; Storage:</b> | Use a manual defrost freezer and avoid repeated freeze-thaw cycles.<br>12 months from date of receipt, -20 to -70°C as supplied.<br>6 months, -20 to -70°C under sterile conditions after reconstitution.<br>1 month, 2 to 8°C under sterile conditions after reconstitution. |
| <b>Shipping:</b>                | The product is shipped at 4°C. Upon receipt, store it immediately at the temperature recommended above.   |

## Application Information

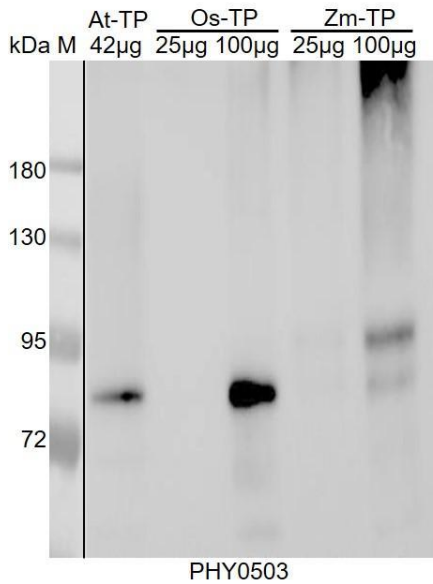
|                                |  |
|--------------------------------|--|
| <b>Recommended Dilution:</b>   | Western Blot (1:1000-1:2500)<br>Note: Optimal dilutions/concentrations should be determined by the end user. |
| <b>Expected / apparent MW:</b> | 80 kDa   |
| <b>Confirmed Reactivity:</b>   | <i>Arabidopsis thaliana</i> , <i>Oryza sativa</i> , <i>Zea mays</i>  |

Research Use Only

**Predicted Reactivity:**

For more species homologues information, please contact tech support at [tech@phytoab.com](mailto:tech@phytoab.com).

**Application Example**



At-TP: 42 µg total protein from *Arabidopsis thaliana*.

Os-TP: 25 µg, 100 µg total protein from *Oryza sativa*, respectively.

Zm-TP: 25 µg, 100 µg total protein from *Zea mays*, respectively.

**Electrophoresis:** 10% SDS-PAGE

**Transfer:** blotting to NC (nitrocellulose) membrane for 1 h.

**Blocking:** 5% skim milk at RT or 4°C for 1 h.

**Primary antibody:** 1:5000 dilution overnight at 4°C.

**Secondary antibody:** 1:5000 dilution using Goat Anti- Mouse IgG H&L(HRP) (Cat# PHY6006).

**Detection:** using chemiluminescence substrate and image were captured with CCD camera.