

Anti-*Gallus gallus domesticus* histone H3-like centromeric protein A (CENPA) antibody

Catalog: NAG1008-001A

Quantity: 200 µL

Immunogen Information:

Background

CENPA, a centromere-specific histone H3 variant, is the epigenetic marker defining the functional centromere location on each chromosome. It replaces canonical H3 within centromeric nucleosomes. CENH3 provides the essential foundation for assembling the kinetochore, the large protein complex that forms during cell division. The kinetochore attached to CENH3 nucleosomes serves as the direct attachment site for spindle microtubules, enabling accurate chromosome segregation to daughter cells.

Immunogen

KLH-conjugated synthetic peptide (16 aa from N terminal section) derived from *Gallus gallus domesticus* CENPA (Uniprot: Q6XXM1; NCBI: NP_001094507).

We also have antibodies for different epitopes from this protein. Please request at info@nanodiaincs.com or <https://www.nanodiaincs.com>.

Basic Information:

Purification: Immunogen affinity purified

Clonality: Polyclonal

Expected MW: 15 kDa

Host: Rabbit

Product Information:

Form: Lyophilized

Reconstitution

Reconstitute with 200 µL of sterile 1×PBS (pH 7.4) containing 30–40% glycerol. If glycerol is incompatible with your applications, use 1×PBS alone and use the reconstituted antibody promptly.

"Note: please spin tube briefly prior to opening it to avoid any losses that might occur from lyophilized material adhering to the cap or sides of the tube".

Stability & Storage

Use a manual defrost freezer and avoid repeated freeze-thaw cycles.

12 months from date of receipt, -20 to -70°C as supplied.

6 months, -20 to -70°C under sterile conditions after reconstitution.

1 month, 2 to 8°C under sterile conditions after reconstitution.

Shipping

The product is shipped at 4°C. Upon receipt, store it immediately at the temperature recommended above.

Applications Information:

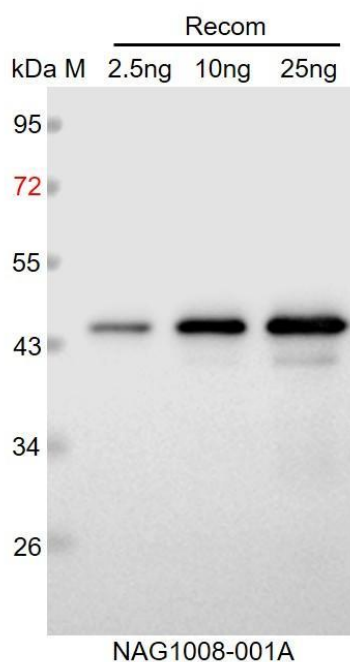
Recommended Dilution: WB (1:1000-1:2000)

Predicted Reactivity: The sequence of the synthetic peptide used for

immunization is 100% homologues with the sequence in *Bambusicola thoracicus* (Chinese bamboo-partridge) (*Perdix thoracica*), *Gallus gallus* (Chicken), *Phasianus colchicus* (Common pheasant), *Callipepla squamata* (Scaled quail).

For more species homologues information, please contact tech support at info@nanodiaincs.com.

Example



Recom: 2.5 ng, 10 ng and 25 ng recombinant protein containing the peptide for immunization and having a molecular mass of 49 kDa.

Electrophoresis: 12% SDS-PAGE

Transfer: blotting to NC (nitrocellulose) membrane for 1 h.

Blocking: 5% skim milk at RT or 4°C for 1 h.

Primary antibody: 1:1000 dilution overnight at 4°C.

Secondary antibody: 1:10000 dilution using Goat Anti-Rabbit IgG H&L (HRP) (Cat# PHY6000).

Detection: using chemiluminescence substrate and image were captured with CCD camera.