

Anti-Catalase isozyme B antibody

Catalog: PHY4547A

Product Information

Description:	Rabbit polyclonal antibody
Background:	Rice CATB encodes catalase isozyme B (EC 1.11.1.6). It protects cells from hydrogen peroxide toxicity, participates in oxidative stress response, and is involved in environmental stress responses and root growth.
Synonyms:	CATB, CatB, OsCatB, OsCATB, CAT-B, OsCAT1B, CAT1B, CAT2, OsCAT2
Immunogen:	KLH-conjugated synthetic peptide (16 aa from C terminal section) derived from <i>Oryza sativa</i> CATB (Os06g0727200).
Form:	Lyophilized
Quantity:	150 µg
Purification:	Immunogen affinity purified
Reconstitution:	Reconstitution with 150 µl of sterile 1XPBS (PH=7.4) containing 30% glycerol. "Note: please spin tube briefly prior to opening it to avoid any losses that might occur from lyophilized material adhering to the cap or sides of the tube".
Stability & Storage:	Use a manual defrost freezer and avoid repeated freeze-thaw cycles. 12 months from date of receipt, -20 to -70°C as supplied. 6 months, -20 to -70°C under sterile conditions after reconstitution. 1 month, 2 to 8°C under sterile conditions after reconstitution.
Shipping:	The product is shipped at 4°C. Upon receipt, store it immediately at the temperature recommended above.

Application Information

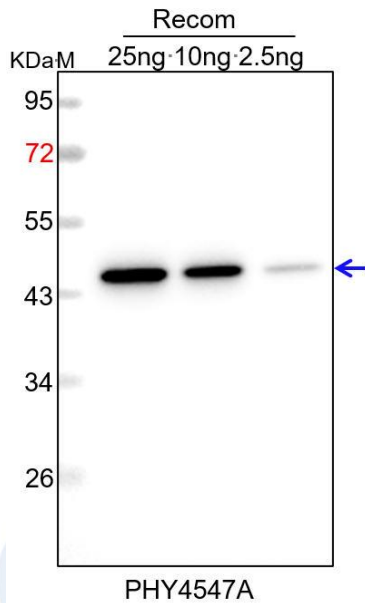
Recommended Dilution:	Western Blot (1:1000-1:2000) Note: Optimal dilutions/concentrations should be determined by the end user.
Expected / apparent MW:	57 kDa
Predicted Reactivity:	Among species analyzed, the sequence of the synthetic peptide used for immunization is 80-99% homologues with the sequence in <i>Nicotiana tabacum</i> , <i>Cucumis sativus</i> , <i>Triticum aestivum</i> , <i>Populus trichocarpa</i> , <i>Zea mays</i> , <i>Panicum virgatum</i> , <i>Sorghum bicolor</i> , <i>Setaria</i>

Research Use Only

viridis, *Gossypium raimondii*, *Solanum tuberosum*, *Chlamydomonas reinhardtii*, *Hordeum vulgare*, *Vitis vinifera*, *Brassica napus*, *Brassica rapa*, *Glycine max*, *Arabidopsis thaliana*.

For more species homologues information, please contact tech support at tech@phytoab.com.

Application Example



Recom: 2.5 ng, 10 ng and 25 ng recombinant protein containing the peptide for immunization and having a molecular mass of 45 kDa.

Electrophoresis: 12% SDS-PAGE

Transfer: blotting to NC (nitrocellulose) membrane for 1 h.

Blocking: 5% skim milk at RT or 4°C for 1 h.

Primary antibody: 1:1000 dilution overnight at 4°C.

Secondary antibody: 1:10000 dilution using Goat Anti-Rabbit IgG H&L (HRP) (Cat# PHY6000).

Detection: using chemiluminescence substrate and image were captured with CCD camera.