

# Anti-Protein HLB1 antibody

Catalog: PHY1502S

## Product Information

<b>Description:</b>	Rabbit polyclonal antibody
<b>Background:</b>	HLB1 is a plant-specific tetratricopeptide repeat domain-containing protein. It is the component of the endomembrane trafficking machinery that is involved in protein recycling to the plasma membrane. It forms a complex with BIG5/MIN7/BEN1 and acts to modulate the function of the trans-Golgi network/early endosome at the intersection of the exocytic and endocytic pathways.
<b>Synonyms:</b>	HLB1, HYPERSENSITIVE TO LATRUNCULIN B 1
<b>Immunogen:</b>	KLH-conjugated synthetic peptide derived from N-terminal section of HLB1 in <i>Arabidopsis thaliana</i> AT5G41950.
<b>Form:</b>	Lyophilized
<b>Quantity:</b>	150 µg
<b>Purification:</b>	Serum Peptide affinity form antibody available upon request at <a href="mailto:info@phytoab.com">info@phytoab.com</a> .
<b>Reconstitution:</b>	Reconstitution with 150 µl of sterile water. "Note: please spin tube briefly prior to opening it to avoid any losses that might occur from lyophilized material adhering to the cap or sides of the tube".
<b>Stability &amp; Storage:</b>	Use a manual defrost freezer and avoid repeated freeze-thaw cycles. 12 months from date of receipt, -20 to -70°C as supplied. 6 months, -20 to -70°C under sterile conditions after reconstitution. 1 month, 2 to 8°C under sterile conditions after reconstitution.
<b>Shipping:</b>	The product is shipped at 4°C. Upon receipt, store it immediately at the temperature recommended above.

## Application Information

<b>Recommended Dilution:</b>	Western Blot (1:1000-1:2000) Note: Optimal dilutions/concentrations should be determined by the end user.
<b>Expected/apparent MW:</b>	62 kDa

Research Use Only

**Confirmed Reactivity:**

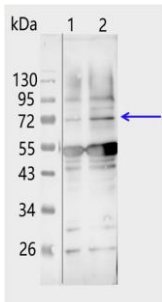
*Arabidopsis thaliana*

**Predicted Reactivity:**

Among 25 analyzed species, the sequence of the synthetic peptide used for immunization is 80-99% homologous with the sequence in *Brassica napus*.

For more species homologues information, please contact tech support at [tech@phytoab.com](mailto:tech@phytoab.com).

## Application Example



Lane 1: 20 µg soluble protein from *Arabidopsis thaliana* leaf.

Lane 2: 50 µg soluble protein from *Arabidopsis thaliana* leaf.

**Electrophoresis:** 12% SDS-PAGE

**Transfer:** blotting to NC (nitrocellulose) membrane for 1 h.

**Blocking:** 5% skim milk at RT or 4°C for 1 h.

**PHY1502S Primary antibody:** 1:1000 dilution overnight at 4°C.

**Secondary antibody:** 1:10000 dilution using Goat Anti-Rabbit IgG H&L (HRP) (Cat# PHY6000).

**Detection:** using chemiluminescence substrate and image were captured with CCD camera.