

Anti-Phosphoglycerate kinase antibody

Catalog: PHY5171S

Product Information

Description:	Rabbit polyclonal antibody
Background:	slr0394
Synonyms:	pgk
Immunogen:	KLH-conjugated synthetic peptide of pgk protein derived from <i>Synechocystis</i> sp. PCC 6803 (slr0394).
Form:	Lyophilized
Quantity:	150 µg
Purification:	Serum Peptide affinity form antibody available upon request at info@phytoab.com .
Reconstitution:	Reconstitution with 150 µl of sterile water. "Note: please spin tube briefly prior to opening it to avoid any losses that might occur from lyophilized material adhering to the cap or sides of the tube".
Stability & Storage:	Use a manual defrost freezer and avoid repeated freeze-thaw cycles. 12 months from date of receipt, -20 to -70°C as supplied. 6 months, -20 to -70°C under sterile conditions after reconstitution. 1 month, 2 to 8°C under sterile conditions after reconstitution.
Shipping:	The product is shipped at 4°C. Upon receipt, store it immediately at the temperature recommended above.

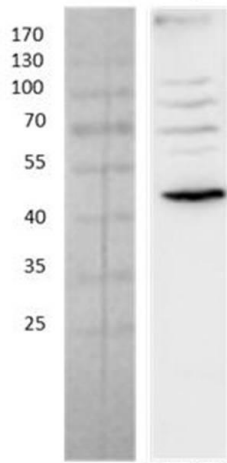
Application Information

Recommended Dilution:	Western Blot (1:1000-1:2000) Note: Optimal dilutions/concentrations should be determined by the end user.
Expected/apparent MW:	42 kDa
Confirmed Reactivity:	<i>Synechocystis</i> sp. PCC 6803
Predicted Reactivity:	Among 25 analyzed species, the sequence of the synthetic peptide used for immunization is 80-99% homologues with the sequence in <i>Arabidopsis thaliana</i> , <i>Glycine max</i> , <i>Spinacia oleracea</i> , <i>Oryza sativa</i> Japonica Group, <i>Zea mays</i> .

Research Use Only

For more species homologues information, please contact tech support at tech@phytoab.com.

Application Example



PHY5171S

50 µg whole-cell lysate protein from WT of *Synechocystis sp. PCC 6803*.

Electrophoresis: 12% SDS-PAGE

Transfer: blotting to NC (nitrocellulose) membrane for 1.5 h.

Blocking: 5% skim milk at RT or 4°C for 2 h.

Primary antibody: 1:300 dilution overnight at 4°C.

Secondary antibody: 1:6000 dilution using Goat Anti-Rabbit IgG H&L (HRP) (Cat# PHY6000).

Detection: using chemiluminescence substrate and image were captured with CCD camera.