

Anti-PsbP domain-containing protein 1, chloroplastic antibody

Catalog: PHY1636S

Product Information

Description:	Rabbit polyclonal antibody
Background:	PPD1 is a nuclear-encoded thylakoid luminal protein that is associated with photosystem I (PSI) but is not an integral subunit of PSI. It is a PSI assembly factor that assists the proper folding and integration of PsaB and PsaA into the thylakoid membrane. It is involved in the assembly of PSI reaction center heterodimer core.
Synonyms:	PPD1, PSBP-DOMAIN PROTEIN1
Immunogen:	KLH-conjugated synthetic peptide of PPD1 derived from <i>Arabidopsis thaliana</i> AT4G15510.
Form:	Lyophilized
Quantity:	150 µg
Purification:	Serum Peptide affinity form antibody available upon request at info@phytoab.com .
Reconstitution:	Reconstitution with 150 µl of sterile water. "Note: please spin tube briefly prior to opening it to avoid any losses that might occur from lyophilized material adhering to the cap or sides of the tube".
Stability &	Use a manual defrost freezer and avoid repeated freeze-thaw cycles.
Storage:	12 months from date of receipt, -20 to -70°C as supplied. 6 months, -20 to -70°C under sterile conditions after reconstitution. 1 month, 2 to 8°C under sterile conditions after reconstitution.
Shipping:	The product is shipped at 4°C. Upon receipt, store it immediately at the temperature recommended above.

Application Information

Recommended Dilution:	Western Blot (1:1000-1:2000) Note: Optimal dilutions/concentrations should be determined by the end user.
Expected/apparent MW:	32 / 21 kDa

Research Use Only

Confirmed Reactivity:

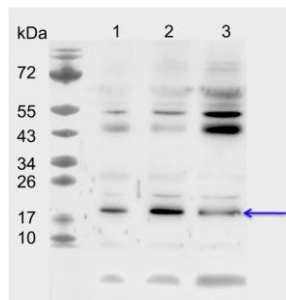
Arabidopsis thaliana

Predicted Reactivity:

Among 25 analyzed species, the sequence of the synthetic peptide used for immunization is 100% homologues with the sequence in *Brassica napus*.

For more species homologues information, please contact tech support at tech@phytoab.com.

Application Example



1-3 is thylakoid membrane protein from *Arabidopsis thaliana* leaf containing 1.25 µg, 2.5 µg, and 5 µg of chlorophyll, respectively.

Electrophoresis: 15% SDS-Urea-PAGE

Transfer: blotting to NC (nitrocellulose) membrane for 1h.

Blocking: 5% skim milk at RT or 4°C for 2 h.

PHY1636S

Primary antibody: 1:1000 dilution overnight at 4°C.

Secondary antibody: 1:10000 dilution using Goat Anti-Rabbit IgG H&L (HRP) (Cat# PHY6000).

Detection: using chemiluminescence substrate and image were captured with CCD camera.