

Anti-Glutathione S tranferase antibody

Catalog: PHY0183A

Product Information

Description:	Rabbit polyclonal antibody
Background:	Glutathione transferase belongs to the phi class of GSTs. The expression of this gene is upregulated by herbicide safeners such as benoxacor and fenclorim.
Synonyms:	GSTF2, GST class-phi, ATGSTF2, ATPM24, ATPM24.1, GLUTATHIONE S-TRANSFERASE PHI 2, GST2.
Immunogen:	KLH-conjugated synthetic peptide of GSTF2 derived from <i>Arabidopsis thaliana</i> AT4G02520.
Form:	Lyophilized
Quantity:	150 µg
Purification:	Immunogen affinity purified
Reconstitution:	Reconstitution with 150 µl of 0.01 M sterile PBS. "Note: please spin tube briefly prior to opening it to avoid any losses that might occur from lyophilized material adhering to the cap or sides of the tube".
Stability & Storage:	Use a manual defrost freezer and avoid repeated freeze-thaw cycles. 12 months from date of receipt, -20 to -70°C as supplied. 6 months, -20 to -70°C under sterile conditions after reconstitution. 1 month, 2 to 8°C under sterile conditions after reconstitution.
Shipping:	The product is shipped at 4°C. Upon receipt, store it immediately at the temperature recommended above.

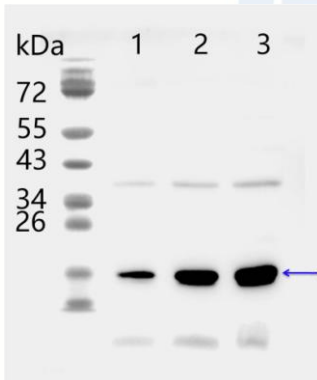
Application Information

Recommended Dilution:	Western Blot (1:1000-1:2000) Note: Optimal dilutions/concentrations should be determined by the end user.
Expected/apparent MW:	24 kDa
Confirmed Reactivity:	<i>Arabidopsis thaliana</i>
Predicted Reactivity:	Among 25 analyzed species, the sequence of the synthetic peptide used for immunization is 100% homologues with the sequence in <i>Brassica rapa subsp. Chinensis</i> .

Research Use Only

For more species homologues information, please contact tech support at tech@phytoab.com.

Application Example



Lane 1: 25 µg total protein from *Arabidopsis thaliana* leaf.

Lane 2: 50 µg total protein from *Arabidopsis thaliana* leaf.

Lane 3: 100 µg total protein from *Arabidopsis thaliana* leaf.

Electrophoresis: 15% SDS-Urea-PAGE

Transfer: blotting to NC (nitrocellulose) membrane for 1 h.

Blocking: 5% skim milk at RT or 4°C for 1 h.

Primary antibody: 1:2000 dilution overnight at 4°C.

Secondary antibody: 1:20000 dilution using Goat Anti-Rabbit IgG H&L (HRP) (Cat# PHY6000).

Detection: using chemiluminescence substrate and image were captured with CCD camera.