

# Anti-SNF1-related protein kinase catalytic subunit alpha KIN10 antibody

Catalog: PHY0235S

## Product Information

<b>Description:</b>	Rabbit polyclonal antibody
<b>Background:</b>	In plants, SNF1-related kinase (SnRK1) responds to the availability of carbohydrates as well as to environmental stresses by down-regulating ATP consuming biosynthetic processes, while stimulating energy-generating catabolic reactions through gene expression and post-transcriptional regulation.
<b>Synonyms:</b>	AKIN10, KIN10, SNF1 KINASE HOMOLOG 10, SNF1-RELATED PROTEIN KINASE 1.1, SNRK1.1
<b>Immunogen:</b>	KLH-conjugated synthetic peptide of AKIN10 derived from <i>Arabidopsis thaliana</i> AT3G01090.
<b>Form:</b>	Lyophilized
<b>Quantity:</b>	150 µg
<b>Purification:</b>	Serum Peptide affinity form antibody available upon request at <a href="mailto:info@phytoab.com">info@phytoab.com</a> .
<b>Reconstitution:</b>	Reconstitution with 150µl of sterile water. "Note: please spin tube briefly prior to opening it to avoid any losses that might occur from lyophilized material adhering to the cap or sides of the tube".
<b>Stability &amp; Storage:</b>	Use a manual defrost freezer and avoid repeated freeze-thaw cycles. 12 months from date of receipt, -20 to -70°C as supplied. 6 months, -20 to -70°C under sterile conditions after reconstitution. 1 month, 2 to 8°C under sterile conditions after reconstitution.
<b>Shipping:</b>	The product is shipped at 4°C. Upon receipt, store it immediately at the temperature recommended above.

## Application Information

<b>Recommended Dilution:</b>	Western Blot (1:1000-1:2000) Note: Optimal dilutions/concentrations should be determined by the end user.
<b>Expected/apparent MW:</b>	58 / 55 kDa

Research Use Only

**Confirmed Reactivity:**

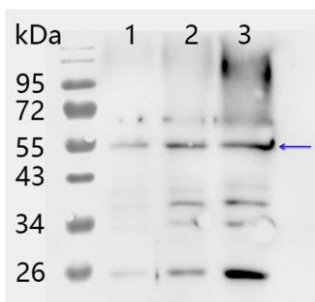
*Arabidopsis thaliana*

**Predicted Reactivity:**

Among 25 analyzed species, the sequence of the synthetic peptide used for immunization is 100% homologues with the sequence in *Zea mays*, *Physcomitrella patens*, *Populus trichocarpa*, *Solanum tuberosum*, *Medicago truncatula*, *Cucumis sativus*, *Hordeum vulgare* subsp. *Vulgare*.

For more species homologues information, please contact tech support at [tech@phytoab.com](mailto:tech@phytoab.com).

## Application Example



Lane 1: 5 µg total protein from *Arabidopsis thaliana* leaf.

Lane 2: 10 µg total protein from *Arabidopsis thaliana* leaf.

Lane 3: 25 µg total protein from *Arabidopsis thaliana* leaf.

**Electrophoresis:** 12% SDS-PAGE

**Transfer:** blotting to NC (nitrocellulose) membrane for 1 h.

**Blocking:** 5% skim milk at RT or 4°C for 1 h.

**PHY0235S**

**Primary antibody:** 1:1000 dilution overnight at 4°C.

**Secondary antibody:** 1:20000 dilution using Goat Anti-Rabbit IgG H&L (HRP) (Cat# PHY6000).

**Detection:** using chemiluminescence substrate and image were captured with CCD camera.