

Anti-Chaperone protein ClpC1, chloroplastic antibody

Catalog: PHY1457A

Product Information

Description:	Rabbit polyclonal antibody
Background:	CLPC1 is similar to ATP-dependent Clp protease ATP-binding subunit / ClpC. It is involved in protein import into the chloroplast.
Synonyms:	CLPC1, ATHSP93-V, CLPC, CLPC HOMOLOGUE 1, DCA1, DE-REGULATED CAO ACCUMULATION 1, HEAT SHOCK PROTEIN 93-V, HSP93-V
Immunogen:	KLH-conjugated synthetic peptide of CLPC1 derived from <i>Arabidopsis thaliana</i> AT5G50920.
Form:	Lyophilized
Quantity:	150 µg
Purification:	Immunogen affinity purified
Reconstitution:	Reconstitution with 150 µl of 0.01 M sterile PBS. "Note: please spin tube briefly prior to opening it to avoid any losses that might occur from lyophilized material adhering to the cap or sides of the tube".
Stability & Storage:	Use a manual defrost freezer and avoid repeated freeze-thaw cycles. 12 months from date of receipt, -20 to -70°C as supplied. 6 months, -20 to -70°C under sterile conditions after reconstitution. 1 month, 2 to 8°C under sterile conditions after reconstitution.
Shipping:	The product is shipped at 4°C. Upon receipt, store it immediately at the temperature recommended above.

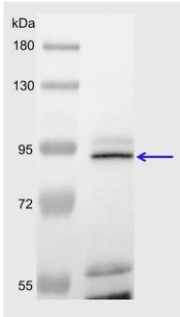
Application Information

Recommended Dilution:	Western Blot (1:1000-1:2000) Note: Optimal dilutions/concentrations should be determined by the end user.
Expected/apparent MW:	103 / 93 kDa
Confirmed Reactivity:	<i>Arabidopsis thaliana</i>
Predicted Reactivity:	Among analyzed species, the sequence of the synthetic peptide used for immunization is 100% homologues with the sequence in <i>Brassica napus</i> , <i>Brassica rapa</i> .

Research Use Only

For more species homologues information, please contact tech support at tech@phytoab.com.

Application Example



4 μ l total chloroplast protein from *Arabidopsis thaliana* leaf.

Electrophoresis: 10% SDS-PAGE

Transfer: blotting to NC (nitrocellulose) membrane for 1 h.

Blocking: 5% skim milk at RT or 4°C for 1 h.

Primary antibody: 1:1000 dilution overnight at 4°C.

Secondary antibody: 1:10000 dilution using Goat Anti-Rabbit IgG H&L(HRP)

PHY1457A (Cat# PHY6000).

Detection: using chemiluminescence substrate and image were captured with CCD camera.