

Anti-MD-2-related lipid recognition 3 antibody

Catalog: PHY0739S

Product Information

Description:	Rabbit polyclonal antibody
Background:	ML3 localizes to the vacuole and to ER bodies and is a Novel NEDD8- and Ubiquitin-Modified Protein. It is also conjugated to ubiquitin, but it can also noncovalently interact with both ubiquitin family proteins. ML3 expression is induced after wounding and herbivore attack as well as by treatment with the hormone MeJA.
Synonyms:	ML3, MD2-RELATED LIPID RECOGNITION 3
Immunogen:	KLH-conjugated synthetic peptide of ML3 derived from <i>Arabidopsis thaliana</i> AT5G23820.
Form:	Lyophilized
Quantity:	150 µg
Purification:	Serum Peptide affinity form antibody available upon request at info@phytoab.com .
Reconstitution:	Reconstitution with 150µl of sterile water. "Note: please spin tube briefly prior to opening it to avoid any losses that might occur from lyophilized material adhering to the cap or sides of the tube".
Stability & Storage:	Use a manual defrost freezer and avoid repeated freeze-thaw cycles. 12 months from date of receipt, -20 to -70°C as supplied. 6 months, -20 to -70°C under sterile conditions after reconstitution. 1 month, 2 to 8°C under sterile conditions after reconstitution.
Shipping:	The product is shipped at 4°C. Upon receipt, store it immediately at the temperature recommended above.

Application Information

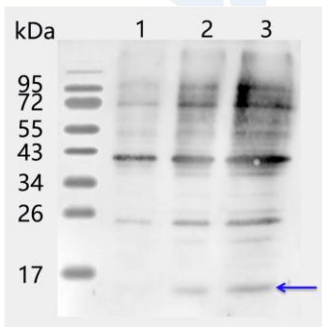
Applications:	Western Blot (1:1000-1:2000) Note: Optimal dilutions/concentrations should be determined by the end user.
Expected Results:	18 kDa
Confirmed Reactivity:	<i>Arabidopsis thaliana</i>

Research Use Only

Predicted Reactivity:

For more species homologues information, please contact tech support at tech@phytoab.com.

Application Example



Lane 1: 10 µg total protein from *Arabidopsis thaliana* leaf.

Lane 2: 25.16 µg total protein from *Arabidopsis thaliana* leaf.

Lane 3: 50.32 µg total protein from *Arabidopsis thaliana* leaf.

Electrophoresis: 15% SDS-PAGE

Transfer: blotting to NC (nitrocellulose) membrane for 1 h.

Blocking: 5% skim milk at RT or 4°C for 1 h.

PHY0739S

Primary antibody: 1:1000 dilution overnight at 4°C.

Secondary antibody: 1:10000 dilution using Goat Anti-Rabbit IgG H&L (HRP) (Cat# PHY6000)

Detection: using chemiluminescence substrate and image were captured with CCD camera.