

Anti-Serine/threonine-protein kinase SRK2A/B antibody

Catalog: PHY0741A

Product Information

Description:	Rabbit polyclonal antibody
Background:	SRK2A/B is a member of SNF1-related protein kinases (SnRK2) whose activity is activated by ionic (salt) and non-ionic (mannitol) osmotic stress.
Synonyms:	SNRK2.4/10, SNF1-RELATED PROTEIN KINASE 2.4/10, SNRK2-4/10, SRK2A/B, SUCROSE NONFERMENTING 1-RELATED PROTEIN KINASE 2-4/10
Immunogen:	KLH-conjugated synthetic peptide of SNRK2.4/10 derived from <i>Arabidopsis thaliana</i> AT1G10940, AT1G60940.
Form:	Lyophilized
Quantity:	150 µg
Purification:	Immunogen affinity purified
Reconstitution:	Reconstitution with 150 µl of 0.01 M sterile PBS. "Note: please spin tube briefly prior to opening it to avoid any losses that might occur from lyophilized material adhering to the cap or sides of the tube".
Stability & Storage:	Use a manual defrost freezer and avoid repeated freeze-thaw cycles. 12 months from date of receipt, -20 to -70°C as supplied. 6 months, -20 to -70°C under sterile conditions after reconstitution. 1 month, 2 to 8°C under sterile conditions after reconstitution.
Shipping:	The product is shipped at 4°C. Upon receipt, store it immediately at the temperature recommended above.

Application Information

Recommended Dilution:	Western Blot (1:1000-1:2000) Note: Optimal dilutions/concentrations should be determined by the end user.
Expected/apparent MW:	42 kDa (AT1G10940), 41 kDa (AT1G60940)
Confirmed Reactivity:	<i>Arabidopsis thaliana</i>
Predicted Reactivity:	Among species analyzed, the sequence of the synthetic peptide used for immunization is 100% homologues with the sequence in <i>Brassica</i>

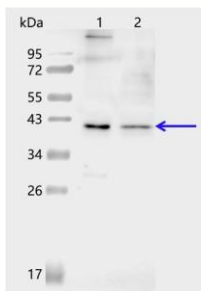
Research Use Only

rapa, *Glycine max*, *Gossypium raimondii*, *Nicotiana tabacum*, and 80-99% homologues with the sequence in *Brassica napus*, *Solanum lycopersicum*, *Solanum tuberosum*, *Vitis vinifera*, *Spinacia oleracea*, *Sorghum bicolor*, *Medicago truncatula*, *Triticum aestivum*.

The sequence of the synthetic peptide used for immunization is 81% homologues with the sequence in SnRK2.5 (AT5G63650).

For more species homologues information, please contact tech support at tech@phytoab.com.

Application Example



Lane 1: 18 µg total protein from *Arabidopsis thaliana* leaf.

Lane 2: 10 µg cytosolic protein from *Arabidopsis thaliana* leaf.

Electrophoresis: 15% SDS-PAGE

Transfer: blotting to NC (nitrocellulose) membrane for 1 h.

Blocking: 5% skim milk at RT or 4°C for 1 h.

PHY0741A Primary antibody: 1:1000 dilution overnight at 4°C.

Secondary antibody: 1:10000 dilution using Goat Anti-Rabbit IgG H&L(HRP) (Cat# PHY6000)

Detection: using chemiluminescence substrate and image were captured with CCD camera.