

Anti-Protein disulfide isomerase-like 1-1 antibody

Catalog: PHY0819S

Product Information

Description:	Rabbit polyclonal antibody
Background:	PDI5 is a member of a multigene family within the thioredoxin (TRX) superfamily; PDI5 is required for proper seed development and regulates the timing of PCD by chaperoning and inhibiting Cys proteases during their trafficking to vacuoles before PCD of the endothelial cells.
Synonyms:	PDI5, ARABIDOPSIS THALIANA PROTEIN DISULFIDE ISOMERASE 5, ATPDI5, ATPDIL1-1, PDI-LIKE 1-1, PDIL1-1, PROTEIN DISULFIDE ISOMERASE 5
Immunogen:	KLH-conjugated synthetic peptide of PDI5, PDI6 derived from <i>Arabidopsis thaliana</i> AT1G21750, AT1G77510.
Form:	Lyophilized
Quantity:	150 µg
Purification:	Serum Peptide affinity form antibody available upon request at info@phytoab.com .
Reconstitution:	Reconstitution with 150µl of sterile water. "Note: please spin tube briefly prior to opening it to avoid any losses that might occur from lyophilized material adhering to the cap or sides of the tube".
Stability &	Use a manual defrost freezer and avoid repeated freeze-thaw cycles.
Storage:	12 months from date of receipt, -20 to -70°C as supplied. 6 months, -20 to -70°C under sterile conditions after reconstitution. 1 month, 2 to 8°C under sterile conditions after reconstitution.
Shipping:	The product is shipped at 4°C. Upon receipt, store it immediately at the temperature recommended above.

Application Information

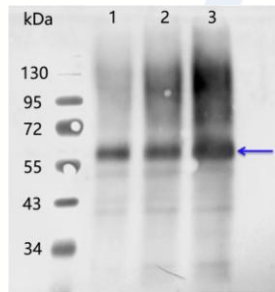
Applications:	Western Blot (1:1000-1:2000); Immunolocalization; Immunofluorescence Note: Optimal dilutions/concentrations should be determined by the end user.
Expected Results:	56 kDa

Research Use Only

Confirmed Reactivity: *Arabidopsis thaliana*

Predicted Reactivity: For more species homologues information, please contact tech support at tech@phytoab.com.

Application Example



Lane 1: 20 µg total protein from *Arabidopsis thaliana* leaf.

Lane 2: 40 µg total protein from *Arabidopsis thaliana* leaf.

Lane 3: 80 µg total protein from *Arabidopsis thaliana* leaf.

Electrophoresis: 12% SDS-PAGE

Transfer: blotting to NC (nitrocellulose) membrane for 1 h.

Blocking: 5% skim milk at RT or 4°C for 1 h.

PHY0819S

Primary antibody: 1:1000 dilution overnight at 4°C.

Secondary antibody: 1:10000 dilution using Goat Anti-Rabbit IgG H&L(HRP) (Cat# PHY6000).

Detection: using chemiluminescence substrate and image were captured with CCD camera.