

# Anti-Transcription factor PIF1 antibody

Catalog: PHY0830S

## Product Information

<b>Description:</b>	Rabbit polyclonal antibody
<b>Background:</b>	PIF1 is a novel Myc-related bHLH transcription factor that has transcriptional activation activity in the dark. It is a key negative regulator of phytochrome-mediated seed germination and acts by inhibiting chlorophyll biosynthesis, light-mediated suppression of hypocotyl elongation and far-red light-mediated suppression of seed germination, and promoting negative gravitropism in hypocotyls. It also negatively regulates GA3 oxidase expression.
<b>Synonyms:</b>	PIF1, PHY-INTERACTING FACTOR 1, PHYTOCHROME INTERACTING FACTOR 3-LIKE 5, PIL5
<b>Immunogen:</b>	KLH-conjugated synthetic peptide of PIF1 derived from <i>Arabidopsis thaliana</i> AT2G20180.
<b>Form:</b>	Lyophilized
<b>Quantity:</b>	150 µg
<b>Purification:</b>	Serum Peptide affinity form antibody available upon request at <a href="mailto:info@phytoab.com">info@phytoab.com</a> .
<b>Reconstitution:</b>	Reconstitution with 150µl of sterile water. "Note: please spin tube briefly prior to opening it to avoid any losses that might occur from lyophilized material adhering to the cap or sides of the tube".
<b>Stability &amp; Storage:</b>	Use a manual defrost freezer and avoid repeated freeze-thaw cycles. 12 months from date of receipt, -20 to -70°C as supplied. 6 months, -20 to -70°C under sterile conditions after reconstitution. 1 month, 2 to 8°C under sterile conditions after reconstitution.
<b>Shipping:</b>	The product is shipped at 4°C. Upon receipt, store it immediately at the temperature recommended above.

## Application Information

<b>Applications:</b>	Western Blot (1:1000-1:2000) Note: Optimal dilutions/concentrations should be determined by the end user.
----------------------	--

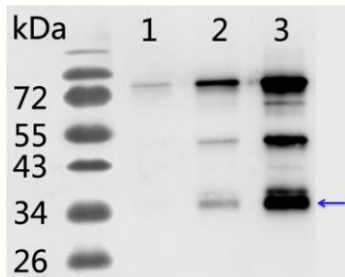
Research Use Only

**Expected Results:** 45 kDa (*Arabidopsis thaliana*), 34 kDa (recombinant protein)

**Confirmed Reactivity:** *Arabidopsis thaliana*

**Predicted Reactivity:** For more species homologues information, please contact tech support at [tech@phytoab.com](mailto:tech@phytoab.com).

## Application Example



Lane 1: 1 ng recombinant protein of PIF1.

Lane 2: 10 ng recombinant protein of PIF1.

Lane 3: 50 ng recombinant protein of PIF1.

**Electrophoresis:** 15% SDS-Urea-PAGE

**Transfer:** blotting to NC (nitrocellulose) membrane for 1 h.

**Blocking:** 5% skim milk at RT or 4°C for 1 h.

**PHY0830S**

**Primary antibody:** 1:1000 dilution overnight at 4°C.

**Secondary antibody:** 1:10000 dilution using Goat Anti-Rabbit IgG H&L (HRP) (Cat# PHY6000)

**Detection:** using chemiluminescence substrate and image were captured with CCD camera.