

# Anti-50S ribosomal protein L24 antibody

Catalog: PHY0426S

## Product Information

<b>Description:</b>	Rabbit polyclonal antibody
<b>Background:</b>	50S ribosomal protein L24 (RP-L24) is one of two assembly initiator proteins, it binds directly to the 5'-end of the 23S rRNA, where it nucleates assembly of the 50S subunit.
<b>Synonyms:</b>	RP-L24, PLASTID RIBOSOMAL PROTEIN L24, RPL24, SUPPRESSOR OF VARIEGATION 8, SVR8
<b>Immunogen:</b>	KLH-conjugated synthetic peptide (15 aa from Central section) derived from <i>Arabidopsis thaliana</i> RP-L24 (AT5G54600).
<b>Form:</b>	Lyophilized
<b>Quantity:</b>	150 µg
<b>Purification:</b>	Serum Peptide affinity form antibody available upon request at <a href="mailto:info@phytoab.com">info@phytoab.com</a> .
<b>Reconstitution:</b>	Reconstitution with 150 µl of sterile water. "Note: please spin tube briefly prior to opening it to avoid any losses that might occur from lyophilized material adhering to the cap or sides of the tube".
<b>Stability &amp; Storage:</b>	Use a manual defrost freezer and avoid repeated freeze-thaw cycles. 12 months from date of receipt, -20 to -70°C as supplied. 6 months, -20 to -70°C under sterile conditions after reconstitution. 1 month, 2 to 8°C under sterile conditions after reconstitution.
<b>Shipping:</b>	The product is shipped at 4°C. Upon receipt, store it immediately at the temperature recommended above.

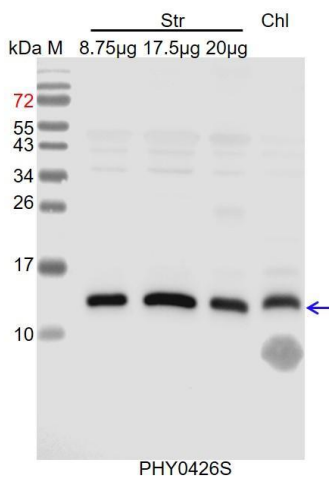
## Application Information

<b>Recommended Dilution:</b>	Western Blot (1:1000-1:2000) Note: Optimal dilutions/concentrations should be determined by the end user.
<b>Expected/apparent MW:</b>	22 kDa
<b>Confirmed Reactivity:</b>	Coming soon
<b>Predicted Reactivity:</b>	Among species analyzed, the sequence of the synthetic peptide used for immunization is 100% homologues with the sequence in <i>Glycine</i>

Research Use Only

*max*, *Solanum tuberosum*, *Vitis vinifera*, *Gossypium raimondii*, *Medicago truncatula*, *Cucumis sativus*, *Solanum lycopersicum*, *Nicotiana tabacum*, and 80-99% homologues with the sequence in *Brassica napus*, *Oryza sativa*, *Panicum virgatum*, *Zea mays*, *Brassica rapa*, *Hordeum vulgare*, *Triticum aestivum*, *Setaria viridis*, *Spinacia oleracea*, *Populus trichocarpa*, *Physcomitrium patens*.  
For more species homologues information, please contact tech support at [tech@phytoab.com](mailto:tech@phytoab.com).

## Application Example



Str: 8.75 µg, 17.5 µg and 20 µg stromal protein from *Arabidopsis thaliana*.

Chl: 7.5 µg total chloroplast protein from *Arabidopsis thaliana*.

**Electrophoresis:** 15% SDS-PAGE.

**Transfer:** blotting to NC (nitrocellulose) membrane for 1 h.

**Blocking:** 5% skim milk at RT or 4°C for 1 h.

**Primary antibody:** 1:2000 dilution overnight at 4°C.

**Secondary antibody:** 1:10000 dilution using Goat Anti-Rabbit IgG H&L (HRP) (Cat# PHY6000).

**Detection:** using chemiluminescence substrate and image were captured with CCD camera.