

# Anti-Syntaxin-related protein KNOLLE, N terminal antibody

Catalog: PHY2910A

## Product Information

|                                 |   |
|---------------------------------|---|
| <b>Description:</b>             | Rabbit polyclonal antibody  |
| <b>Background:</b>              | SYP111 is a member of SYP11 syntaxin Gene Family. It is involved in cytokinesis. It acts as a cell plate-specific syntaxin, required for the fusion of vesicles at the plane of cell division.  |
| <b>Synonyms:</b>                | SYP111, ATSYP111, KN, KNOLLE, SYNTAXIN OF PLANTS 111  |
| <b>Immunogen:</b>               | KLH-conjugated synthetic peptide (16 aa from N terminal section) derived from <i>Arabidopsis thaliana</i> SYP111 (AT1G08560).   |
| <b>Form:</b>                    | Lyophilized   |
| <b>Quantity:</b>                | 150 µg  |
| <b>Purification:</b>            | Immunogen affinity purified   |
| <b>Reconstitution:</b>          | Reconstitution with 150 µl of 0.01 M sterile PBS.<br>"Note: please spin tube briefly prior to opening it to avoid any losses that might occur from lyophilized material adhering to the cap or sides of the tube".  |
| <b>Stability &amp; Storage:</b> | Use a manual defrost freezer and avoid repeated freeze-thaw cycles.<br>12 months from date of receipt, -20 to -70°C as supplied.<br>6 months, -20 to -70°C under sterile conditions after reconstitution.<br>1 month, 2 to 8°C under sterile conditions after reconstitution. |
| <b>Shipping:</b>                | The product is shipped at 4°C. Upon receipt, store it immediately at the temperature recommended above.   |

## Application Information

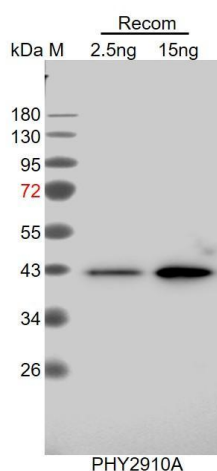
|                                |  |
|--------------------------------|--|
| <b>Recommended Dilution:</b>   | Western Blot (1:1000-1:2000)<br>Note: Optimal dilutions/concentrations should be determined by the end user.                               |
| <b>Expected / apparent MW:</b> | 35 kDa   |
| <b>Confirmed Reactivity:</b>   | Coming soon  |
| <b>Predicted Reactivity:</b>   | Among species analyzed, the sequence of the synthetic peptide used for immunization is 80-99% homologues with the sequence in <i>Oryza</i> |

Research Use Only

*sativa Indica Group, Oryza sativa Japonica Group, Triticum aestivum, Sorghum bicolor, Hordeum vulgare, Zea mays, Setaria viridis, Panicum virgatum, Nicotiana tabacum, Brassica napus, Brassica rapa, Gossypium raimondii, Populus trichocarpa, Vitis vinifera, Glycine max, Solanum tuberosum, Solanum lycopersicum, Medicago truncatula.*

For more species homologues information, please contact tech support at [tech@phytoab.com](mailto:tech@phytoab.com).

## Application Example



Recom: 5 ng and 15 ng recombinant protein containing the peptide for immunization and having a molecular mass of 45 kDa.

**Electrophoresis:** 12% SDS-PAGE.

**Transfer:** blotting to NC (nitrocellulose) membrane for 1h.

**Blocking:** 5% skim milk at RT or 4°C for 1h.

**Primary antibody:** 1:1000 dilution overnight at 4°C.

**Secondary antibody:** 1:10000 dilution using Goat Anti-Rabbit IgG H&L (HRP) (Cat# PHY6000).

**Detection:** using chemiluminescence substrate and image were captured with CCD camera.