

# Anti-NAD(P)H-quinone oxidoreductase subunit 5, chloroplastic antibody

Catalog: PHY2979A

## Product Information

<b>Description:</b>	Rabbit polyclonal antibody
<b>Background:</b>	NDHF is involved in the transfer of electrons from NAD(P)H: plastoquinone, via FMN and iron-sulfur centers, to quinones in the photosynthetic chain and possibly in a chloroplast respiratory chain.
<b>Synonyms:</b>	NDHF
<b>Immunogen:</b>	KLH-conjugated synthetic peptide (19 aa from N terminal section) derived from <i>Arabidopsis thaliana</i> NDHF (ATCG01010).
<b>Form:</b>	Lyophilized
<b>Quantity:</b>	150 µg
<b>Purification:</b>	Immunogen affinity purified
<b>Reconstitution:</b>	Reconstitution with 150 µl of 0.01 M sterile PBS. "Note: please spin tube briefly prior to opening it to avoid any losses that might occur from lyophilized material adhering to the cap or sides of the tube".
<b>Stability &amp; Storage:</b>	Use a manual defrost freezer and avoid repeated freeze-thaw cycles. 12 months from date of receipt, -20 to -70°C as supplied. 6 months, -20 to -70°C under sterile conditions after reconstitution. 1 month, 2 to 8°C under sterile conditions after reconstitution.
<b>Shipping:</b>	The product is shipped at 4°C. Upon receipt, store it immediately at the temperature recommended above.

## Application Information

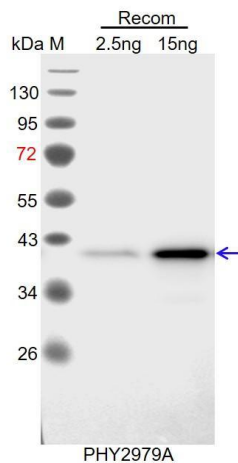
<b>Recommended Dilution:</b>	Western Blot (1:1000-1:2000) Note: Optimal dilutions/concentrations should be determined by the end user.
<b>Expected / apparent MW:</b>	85 kDa
<b>Confirmed Reactivity:</b>	Coming soon
<b>Predicted Reactivity:</b>	Among species analyzed, the sequence of the synthetic peptide used for immunization is 100% homologues with the sequence in

Research Use Only

*Medicago truncatula*, *Hordeum vulgare*, *Brassica rapa*, *Populus trichocarpa*, *Glycine max*, *Vitis vinifera*, *Cucumis sativus*, *Brassica napus*, *Spinacia oleracea*, *Nicotiana tabacum*, *Leymus chinensis*, *Solanum tuberosum*, *Triticum aestivum*, *Zea mays*, *Triticum aestivum*, *Sorghum bicolor*, *Setaria viridis*, *Solanum lycopersicum*, *Panicum virgatum*, *Gossypium raimondii*, *Oryza sativa*, and 80-99% homologues with the sequence in *Physcomitrium patens*.

For more species homologues information, please contact tech support at [tech@phytoab.com](mailto:tech@phytoab.com).

## Application Example



Recom: 2.5 ng and 15 ng recombinant protein containing the peptide for immunization and having a molecular mass of 40 kDa.

**Electrophoresis:** 12% SDS-PAGE.

**Transfer:** blotting to NC (nitrocellulose) membrane for 1h.

**Blocking:** 5% skim milk at RT or 4°C for 1h.

**Primary antibody:** 1:1000 dilution overnight at 4°C.

**Secondary antibody:** 1:10000 dilution using Goat Anti-Rabbit IgG H&L (HRP) (Cat# PHY6000).

**Detection:** using chemiluminescence substrate and image were captured with CCD camera.