

Anti-Phototropin-1 antibody

Catalog: PHY1401A

Product Information

Description:	Rabbit polyclonal antibody
Background:	Phototropins (phot1) are plasma membrane-associated serine/threonine kinases that coordinate a range of processes linked to optimizing photosynthetic efficiency in plants. Phototropins (phot1 and phot2), light-activated receptor kinases, redundantly regulate various photoresponses such as phototropism, chloroplast photorelocation movement, stomatal opening, and leaf flattening. Phototropin1 is a blue light (BL) receptor in plants and shows BL-dependent kinase activation.
Synonyms:	PHOT1, JK224, NONPHOTOTROPIC HYPOCOTYL 1, NPH1, PHOTOTROPIN 1, ROOT PHOTOTROPISM 1, RPT1
Immunogen:	KLH-conjugated synthetic peptide (12 aa from C terminal section) derived from <i>Arabidopsis thaliana</i> PHOT1 (AT3G45780).
Form:	Lyophilized
Quantity:	150 µg
Purification:	Immunogen affinity purified
Reconstitution:	Reconstitution with 150 µl of 0.01 M sterile PBS. "Note: please spin tube briefly prior to opening it to avoid any losses that might occur from lyophilized material adhering to the cap or sides of the tube".
Stability & Storage:	Use a manual defrost freezer and avoid repeated freeze-thaw cycles. 12 months from date of receipt, -20 to -70°C as supplied. 6 months, -20 to -70°C under sterile conditions after reconstitution. 1 month, 2 to 8°C under sterile conditions after reconstitution.
Shipping:	The product is shipped at 4°C. Upon receipt, store it immediately at the temperature recommended above.

Application Information

Recommended Dilution:	Western Blot (1:1000-1:2000) Note: Optimal dilutions/concentrations should be determined by the end user.
Expected / apparent MW:	112 kDa

Research Use Only

Confirmed Reactivity:

Coming soon

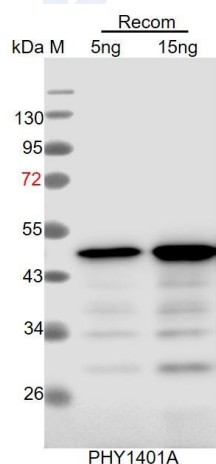
Predicted Reactivity:

Among species analyzed, the sequence of the synthetic peptide used for immunization is 100% homologues with the sequence in *Cucumis sativus*, *Nicotiana tabacum*, *Glycine max*, *Solanum tuberosum*, *Gossypium raimondii*, *Solanum lycopersicum*, *Vitis vinifera*, *Brassica rapa*, *Brassica napus*, *Medicago truncatula*, *Spinacia oleracea*, *Triticum aestivum*, *Oryza sativa*, *Hordeum vulgare*, *Sorghum bicolor*, *Zea mays*, *Setaria viridis*, *Panicum virgatum*.

The sequence of the synthetic peptide used for immunization is 83% homologues with the sequence in PHOT2 (AT5G58140), AGC2-1 (AT3G25250) and AT4G13000.

For more species homologues information, please contact tech support at tech@phytoab.com.

Application Example



Recom: 5 ng and 15 ng recombinant protein containing the peptide for immunization and having a molecular mass of 50 kDa.

Electrophoresis: 12% SDS-PAGE.

Transfer: blotting to NC (nitrocellulose) membrane for 1h.

Blocking: 5% skim milk at RT or 4°C for 1h.

Primary antibody: 1:1000 dilution overnight at 4°C.

Secondary antibody: 1:10000 dilution using Goat Anti-Rabbit IgG H&L (HRP) (Cat# PHY6000).

Detection: using chemiluminescence substrate and image were captured with CCD camera.