

# Anti-PsbW subunit of Photosystem II, C-terminal antibody

Catalog: PHY3519S

## Product Information

<b>Description:</b>	Rabbit polyclonal antibody
<b>Background:</b>	PsbW is a nuclear-encoded PSII subunit and found in higher plants but not in cyanobacteria. PsbW has an apparent molecular mass of 6.1 kDa containing 54 amino acids.
<b>Synonyms:</b>	PsbW, Photosystem II reaction center W protein, chloroplastic, PSII 6.1 kDa protein
<b>Immunogen:</b>	KLH-conjugated synthetic peptide (12 aa from C terminal section) derived from <i>Arabidopsis thaliana</i> PsbW (AT2G30570).
<b>Form:</b>	Lyophilized
<b>Quantity:</b>	150 µg
<b>Purification:</b>	Serum Peptide affinity form antibody available upon request at <a href="mailto:info@phytoab.com">info@phytoab.com</a> .
<b>Reconstitution:</b>	Reconstitution with 150 µl of sterile water. "Note: please spin tube briefly prior to opening it to avoid any losses that might occur from lyophilized material adhering to the cap or sides of the tube".
<b>Stability &amp; Storage:</b>	Use a manual defrost freezer and avoid repeated freeze-thaw cycles. 12 months from date of receipt, -20 to -70°C as supplied. 6 months, -20 to -70°C under sterile conditions after reconstitution. 1 month, 2 to 8°C under sterile conditions after reconstitution.
<b>Shipping:</b>	The product is shipped at 4°C. Upon receipt, store it immediately at the temperature recommended above.

## Application Information

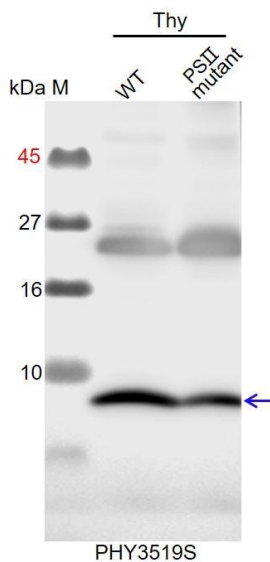
<b>Recommended Dilution:</b>	Western Blot (1:1000-1:2000) Note: Optimal dilutions/concentrations should be determined by the end user.
<b>Expected / apparent MW:</b>	14 / 9 kDa
<b>Confirmed Reactivity:</b>	<i>Arabidopsis thaliana</i>

Research Use Only

### Predicted Reactivity:

Among species analyzed, the sequence of the synthetic peptide used for immunization is 100% homologues with the sequence in *Glycine max*, *Gossypium raimondii*, and 80-99% homologues with the sequence in *Cucumis sativus*, *Brassica rapa*, *Brassica napus*, *Nicotiana tabacum*, *Vitis vinifera*, *Populus trichocarpa*, *Medicago truncatula*, *Spinacia oleracea*, *Sorghum bicolor*, *Oryza sativa*. For more species homologues information, please contact tech support at [tech@phytoab.com](mailto:tech@phytoab.com).

### Application Example



WT: thylakoid membrane protein from WT of *Arabidopsis thaliana* containing 2.5 µg of chlorophyll.

PSII mutant: thylakoid membrane protein from an *Arabidopsis* mutant with low accumulation of PSI containing 2.5 µg of chlorophyll.

**Electrophoresis:** Tricine-SDS-PAGE.

**Transfer:** blotting to NC (nitrocellulose) membrane for 1h.

**Blocking:** 5% skim milk at RT or 4°C for 1h.

**Primary antibody:** 1:2000 dilution overnight at 4°C.

**Secondary antibody:** 1:10000 dilution using Goat Anti-Rabbit IgG H&L (HRP) (Cat# PHY6000).

**Detection:** using chemiluminescence substrate and image were captured with CCD camera.