

# Anti-Shaggy-related protein kinase 11/12/21/22/23 antibody

Catalog: PHY1437A

## Product Information

<b>Description:</b>	Rabbit polyclonal antibody
<b>Background:</b>	The key role that SnRKs play at the interface between metabolic and stress signalling make them potential candidates for manipulation to improve crop performance in extreme environments. In <i>Arabidopsis thaliana</i> , The AtSK family has evolved into 10 members possessing diverse functions, of which 7 members have been implicated in the brassinosteroid (BR) signaling pathway.
<b>Synonyms:</b>	SK 11/12/21/22/23
<b>Immunogen:</b>	KLH-conjugated synthetic peptide (15 aa from N terminal section) derived from <i>Arabidopsis thaliana</i> SK 11 (AT5G26751), SK 12 (AT3G05840), SK 21 (AT4G18710), SK 22 (AT1G06390) and SK 23 (AT2G30980).
<b>Form:</b>	Lyophilized
<b>Quantity:</b>	150 µg
<b>Purification:</b>	Immunogen affinity purified
<b>Reconstitution:</b>	Reconstitution with 150 µl of 0.01 M sterile PBS. "Note: please spin tube briefly prior to opening it to avoid any losses that might occur from lyophilized material adhering to the cap or sides of the tube".
<b>Stability &amp; Storage:</b>	Use a manual defrost freezer and avoid repeated freeze-thaw cycles. 12 months from date of receipt, -20 to -70°C as supplied. 6 months, -20 to -70°C under sterile conditions after reconstitution. 1 month, 2 to 8°C under sterile conditions after reconstitution.
<b>Shipping:</b>	The product is shipped at 4°C. Upon receipt, store it immediately at the temperature recommended above.

## Application Information

<b>Recommended Dilution:</b>	Western Blot (1:1000-1:2000) Note: Optimal dilutions/concentrations should be determined by the end user.
<b>Expected / apparent MW:</b>	43/46/47 kDa

Research Use Only

**Confirmed Reactivity:**

Coming soon

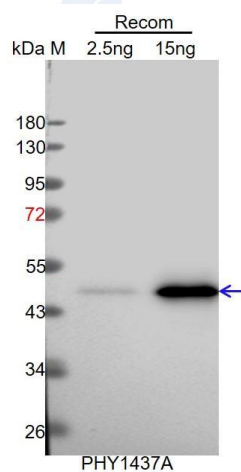
**Predicted Reactivity:**

Among species analyzed, the sequence of the synthetic peptide used for immunization is 100% homologues with the sequence in *Glycine max*, *Brassica napus*, *Nicotiana tabacum*, *Solanum tuberosum*, *Solanum lycopersicum*, *Vitis vinifera*, *Zea mays*, *Brassica rapa*, *Panicum virgatum*, *Oryza sativa*, *Triticum aestivum*, *Setaria viridis*, *Spinacia oleracea*.

The sequence of the synthetic peptide used for immunization is 93% homologues with the sequence in SK 13 (AT5G14640), SK 32 (AT4G00720), SK 41 (AT1G09840), SK 42 (AT1G57870) and AT3G61160 .

For more species homologues information, please contact tech support at [tech@phytoab.com](mailto:tech@phytoab.com).

## Application Example



Recom: 2.5 ng and 15 ng recombinant protein containing the peptide for immunization and having a molecular mass of 47 kDa.

**Electrophoresis:** 12% SDS-PAGE.

**Transfer:** blotting to NC (nitrocellulose) membrane for 1h.

**Blocking:** 5% skim milk at RT or 4°C for 1h.

**Primary antibody:** 1:1000 dilution overnight at 4°C.

**Secondary antibody:** 1:10000 dilution using Goat Anti-Rabbit IgG H&L (HRP) (Cat# PHY6000).

**Detection:** using chemiluminescence substrate and image were captured with CCD camera.