

# Anti-NAD(P)H-quinone oxidoreductase subunit K 1 antibody

Catalog: PHY5362A

## Product Information

<b>Description:</b>	Rabbit polyclonal antibody
<b>Background:</b>	PSBG
<b>Synonyms:</b>	PSBG, ndhK1, NDH-K 1, NAD(P)H dehydrogenase I subunit K 1, NDH-1 subunit K 1, psbG
<b>Immunogen:</b>	KLH-conjugated synthetic peptide (16 aa from N terminal section) derived from <i>Synechocystis sp.</i> PCC 6803 PSBG (slr1280).
<b>Form:</b>	Lyophilized
<b>Quantity:</b>	150 µg
<b>Purification:</b>	Serum
	Peptide affinity form antibody available upon request at <a href="mailto:info@phytoab.com">info@phytoab.com</a> .
<b>Reconstitution:</b>	Reconstitution with 150 µl of sterile water. "Note: please spin tube briefly prior to opening it to avoid any losses that might occur from lyophilized material adhering to the cap or sides of the tube".
<b>Stability &amp; Storage:</b>	Use a manual defrost freezer and avoid repeated freeze-thaw cycles. 12 months from date of receipt, -20 to -70°C as supplied. 6 months, -20 to -70°C under sterile conditions after reconstitution. 1 month, 2 to 8°C under sterile conditions after reconstitution.
<b>Shipping:</b>	The product is shipped at 4°C. Upon receipt, store it immediately at the temperature recommended above.

## Application Information

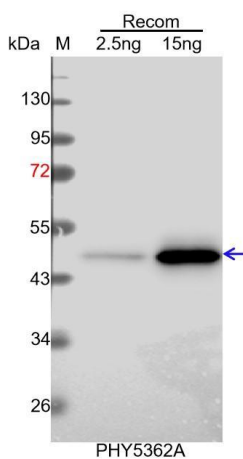
<b>Recommended Dilution:</b>	Western Blot (1:1000-1:2000) Note: Optimal dilutions/concentrations should be determined by the end user.
<b>Expected / apparent MW:</b>	27 kDa
<b>Confirmed Reactivity:</b>	Coming soon
<b>Predicted Reactivity:</b>	Among species analyzed, the sequence of the synthetic peptide used for immunization is 80-99% homologues with the sequence in <i>Zea</i>

Research Use Only

*mays, Oryza sativa, Medicago truncatula, Hordeum vulgare, Nicotiana tabacum, Vitis vinifera, Physcomitrium patens, Triticum aestivum, Panicum virgatum, Setaria viridis, Leymus chinensis, Populus trichocarpa, Sorghum bicolor, Arabidopsis thaliana, Cucumis sativus, Gossypium raimondii, Brassica napus, Brassica rapa, Glycine max, Solanum tuberosum, Spinacia oleracea, Solanum lycopersicum.*

For homologues with other species especially algae, please contact tech support at [tech@phytoab.com](mailto:tech@phytoab.com).

## Application Example



Recom: 2.5 ng and 15 ng recombinant protein containing the peptide for immunization and having a molecular mass of 49 kDa.

**Electrophoresis:** 12% SDS-PAGE

**Transfer:** blotting to NC (nitrocellulose) membrane for 1 h.

**Blocking:** 5% skim milk at RT or 4°C for 1 h.

**Primary antibody:** 1:1000 dilution overnight at 4°C.

**Secondary antibody:** 1:10000 dilution using Goat Anti-Rabbit IgG H&L (HRP) (Cat# PHY6000)

**Detection:** using chemiluminescence substrate and image were captured with CCD camera.