

# Anti-Magnesium-chelatase subunit ChID antibody

Catalog: PHY5311S

## Product Information

<b>Description:</b>	Rabbit polyclonal antibody
<b>Background:</b>	chID
<b>Synonyms:</b>	chID
<b>Immunogen:</b>	KLH-conjugated synthetic peptide (17 aa from N terminal section) derived from <i>Synechocystis sp.</i> PCC 6803 chID (slr1777).
<b>Form:</b>	Lyophilized
<b>Quantity:</b>	150 µg
<b>Purification:</b>	Serum Peptide affinity form antibody available upon request at <a href="mailto:info@phytoab.com">info@phytoab.com</a> .
<b>Reconstitution:</b>	Reconstitution with 150 µl of sterile water. "Note: please spin tube briefly prior to opening it to avoid any losses that might occur from lyophilized material adhering to the cap or sides of the tube".
<b>Stability &amp; Storage:</b>	Use a manual defrost freezer and avoid repeated freeze-thaw cycles. 12 months from date of receipt, -20 to -70°C as supplied. 6 months, -20 to -70°C under sterile conditions after reconstitution. 1 month, 2 to 8°C under sterile conditions after reconstitution.
<b>Shipping:</b>	The product is shipped at 4°C. Upon receipt, store it immediately at the temperature recommended above.

## Application Information

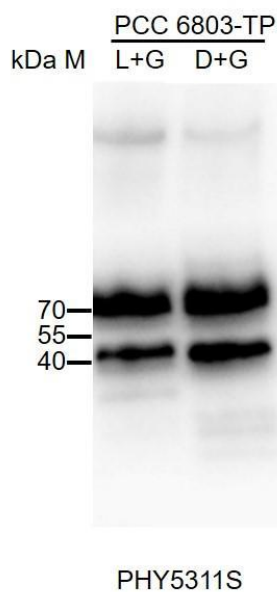
<b>Recommended Dilution:</b>	Western Blot (1:1000-1:2000) Note: Optimal dilutions/concentrations should be determined by the end user.
<b>Expected / apparent MW:</b>	74 / 72 kDa
<b>Confirmed Reactivity:</b>	<i>Synechocystis sp.</i> PCC 6803
<b>Predicted Reactivity:</b>	Among species analyzed, the sequence of the synthetic peptide used for immunization is 80-99% homologues with the sequence in <i>Synechococcus elongatus</i> , <i>Chlamydomonas reinhardtii</i> , <i>Vitis vinifera</i> , <i>Cucumis sativus</i> , <i>Triticum aestivum</i> , <i>Zea mays</i> , <i>Panicum virgatum</i> , <i>Solanum lycopersicum</i> , <i>Arabidopsis thaliana</i> , <i>Solanum tuberosum</i> ,

Research Use Only

*Spinacia oleracea*, *Populus trichocarpa*, *Hordeum vulgare*, *Glycine max*, *Brassica napus*, *Brassica rapa*, *Nicotiana tabacum*, *Sorghum bicolor*, *Oryza sativa*, *Gossypium raimondii*, *Setaria viridis*.

For homologues with other species especially algae, please contact tech support at [tech@phytoab.com](mailto:tech@phytoab.com).

## Application Example



PCC 6803+L/G: 30 µg whole-cell lysate protein from WT of *Synechocystis* sp. PCC 6803 (Light Plus Glucose).

PCC 6803+G: 30 µg whole-cell lysate protein from WT of *Synechocystis* sp. PCC 6803 (Dark Plus Glucose).

**Electrophoresis:** (5-20)% Gradient gel

**Transfer:** blotting to NC (nitrocellulose) membrane for 1 h.

**Blocking:** 5% skim milk at RT or 4°C for 1 h.

**Primary antibody:** 1:1000 dilution overnight at 4°C.

**Secondary antibody:** 1:10000 dilution using Goat Anti-Rabbit IgG H&L (HRP) (Cat# PHY6000).

**Detection:** using chemiluminescence substrate and image were captured with CCD camera.