

# Anti-Carboxysome assembly protein CcmM antibody

Catalog: PHY5331S

## Product Information

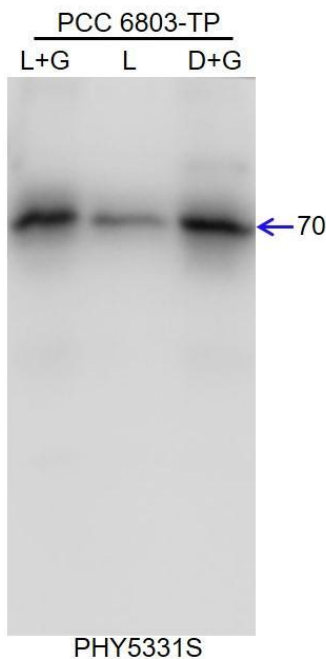
<b>Description:</b>	Rabbit polyclonal antibody
<b>Background:</b>	ccmM
<b>Synonyms:</b>	ccmM
<b>Immunogen:</b>	KLH-conjugated synthetic peptide (18 aa from C terminal section) derived from <i>Synechocystis</i> sp. PCC 6803 ccmM (sll1031).
<b>Form:</b>	Lyophilized
<b>Quantity:</b>	150 µg
<b>Purification:</b>	Serum Peptide affinity form antibody available upon request at <a href="mailto:info@phytoab.com">info@phytoab.com</a> .
<b>Reconstitution:</b>	Reconstitution with 150 µl of sterile water. "Note: please spin tube briefly prior to opening it to avoid any losses that might occur from lyophilized material adhering to the cap or sides of the tube".
<b>Stability &amp; Storage:</b>	Use a manual defrost freezer and avoid repeated freeze-thaw cycles. 12 months from date of receipt, -20 to -70°C as supplied. 6 months, -20 to -70°C under sterile conditions after reconstitution. 1 month, 2 to 8°C under sterile conditions after reconstitution.
<b>Shipping:</b>	The product is shipped at 4°C. Upon receipt, store it immediately at the temperature recommended above.

## Application Information

<b>Recommended Dilution:</b>	Western Blot (1:1000-1:2000) Note: Optimal dilutions/concentrations should be determined by the end user.
<b>Expected / apparent MW:</b>	73 / 70 kDa
<b>Confirmed Reactivity:</b>	<i>Synechocystis</i> sp. PCC 6803
<b>Predicted Reactivity:</b>	For homologues with other species especially algae, please contact tech support at <a href="mailto:tech@phytoab.com">tech@phytoab.com</a> .

Research Use Only

## Application Example



PCC 6803+L/G: 30 µg whole-cell lysate protein from WT of *Synechocystis* sp. PCC 6803 (Light Plus Glucose).

PCC 6803+L: 30 µg whole-cell lysate protein from WT of *Synechocystis* sp. PCC 6803 (Light without Glucose).

PCC6803+G: 30 µg whole-cell lysate protein from WT of *Synechocystis* sp. PCC 6803 (Dark Plus Glucose).

**Electrophoresis:** (5-20)% Gradient gel

**Transfer:** blotting to NC (nitrocellulose) membrane for 1 h.

**Blocking:** 5% skim milk at RT or 4°C for 1 h.

**Primary antibody:** 1:1000 dilution overnight at 4°C.

**Secondary antibody:** 1:10000 dilution using Goat Anti-Mouse IgG H&L (HRP) ([Cat# PHY6000](#)).

**Detection:** using chemiluminescence substrate and image were captured with CCD camera.