

Anti-PsbE subunit of Photosystem II antibody

Catalog: PHY0124A

Product Information

Description:	Rabbit polyclonal antibody
Background:	PsbE subunit of PSII is also called cytochrome b559 α . It is a small subunit of PSII and localized in the PSII reaction center. This subunit may play a protective role by acting as an electron acceptor or electron donor.
Synonyms:	PsbE, PHOTOSYSTEM II REACTION CENTER PROTEIN E, Cyt b559 α
Immunogen:	KLH-conjugated synthetic peptide of PsbE (14 aa from Central section) derived from <i>Arabidopsis thaliana</i> PsbE (ATCG00580).
Form:	Lyophilized
Quantity:	150 μ g
Purification:	Immunogen affinity purified
Reconstitution:	Reconstitution with 150 μ l of 0.01 M sterile PBS. "Note: please spin tube briefly prior to opening it to avoid any losses that might occur from lyophilized material adhering to the cap or sides of the tube".
Stability & Storage:	Use a manual defrost freezer and avoid repeated freeze-thaw cycles. 12 months from date of receipt, -20 to -70°C as supplied. 6 months, -20 to -70°C under sterile conditions after reconstitution. 1 month, 2 to 8°C under sterile conditions after reconstitution.
Shipping:	The product is shipped at 4°C. Upon receipt, store it immediately at the temperature recommended above.

Application Information

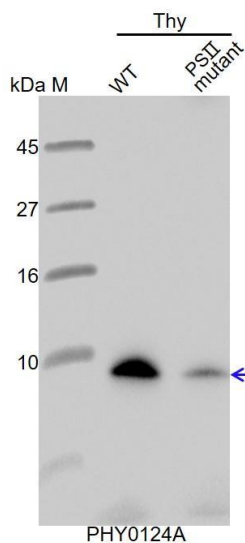
Recommended Dilution:	Western Blot (1:1000-1:2000) Note: Optimal dilutions/concentrations should be determined by the end user.
Expected / apparent MW:	9 kDa
Confirmed Reactivity:	<i>Arabidopsis thaliana</i>
Predicted Reactivity:	Among species analyzed, the sequence of the synthetic peptide used for immunization is 100% homologues with the sequence in <i>Triticum aestivum</i> , <i>Gossypium raimondii</i> , <i>Sorghum bicolor</i> , <i>Vitis vinifera</i> , <i>Brassica napus</i> , <i>Glycine max</i> , <i>Medicago truncatula</i> , <i>Oryza sativa</i> ,

Research Use Only

Spinacia oleracea, *Glycine max*, *Physcomitrium patens*, *Hordeum vulgare*, and 80-99% homologues with the sequence in *Nicotiana tabacum*, *Zea mays*, *Chlamydomonas reinhardtii*, *Populus trichocarpa*.

For more species homologues information, please contact tech support at tech@phytoab.com.

Application Example



Thy-WT: thylakoid membrane protein from WT of *Arabidopsis thaliana* leaf containing 1.25 µg of chlorophyll.

Thy-PS II mutant: thylakoid membrane protein from an *Arabidopsis* mutant with low accumulation of PS II containing 1.25 µg of chlorophyll.

Electrophoresis: Tricine-SDS-PAGE

Transfer: blotting to NC (nitrocellulose) membrane for 1 h.

Blocking: 5% skim milk at RT or 4°C for 1 h.

Primary antibody: 1:2000 dilution overnight at 4°C.

Secondary antibody: 1:10000 dilution using Goat Anti-Rabbit IgG H&L(HRP) (Cat# PHY6000).

Detection: using chemiluminescence substrate and image were captured with CCD camera.