

# Anti-PsaA subunit of Photosystem I, N-terminal antibody

Catalog: PHY0368A

## Product Information

<b>Description:</b>	Rabbit polyclonal antibody
<b>Background:</b>	Photosystem I (PSI) is a multisubunit complex that catalyses the final stage of the light reactions in chloroplasts. This protein complex has two main components forming its core complex, PsaA and PsaB. These two subunits bind most of the cofactors required for charge separation and electron transfer in PSI.
<b>Synonyms:</b>	PsaA, PSI-A
<b>Immunogen:</b>	KLH-conjugated synthetic peptide (15 aa from N terminal section) derived from <i>Arabidopsis thaliana</i> PsaA (ATCG00350).
<b>Form:</b>	Lyophilized
<b>Quantity:</b>	150 µg
<b>Purification:</b>	Immunogen affinity purified
<b>Reconstitution:</b>	Reconstitution with 150 µl of 0.01 M sterile PBS. "Note: please spin tube briefly prior to opening it to avoid any losses that might occur from lyophilized material adhering to the cap or sides of the tube".
<b>Stability &amp; Storage:</b>	Use a manual defrost freezer and avoid repeated freeze-thaw cycles. 12 months from date of receipt, -20 to -70°C as supplied. 6 months, -20 to -70°C under sterile conditions after reconstitution. 1 month, 2 to 8°C under sterile conditions after reconstitution.
<b>Shipping:</b>	The product is shipped at 4°C. Upon receipt, store it immediately at the temperature recommended above.

## Application Information

<b>Recommended Dilution:</b>	Western Blot (1:1000-1:2000) Note: Optimal dilutions/concentrations should be determined by the end user.
<b>Expected / apparent MW:</b>	83 / 60 kDa
<b>Confirmed Reactivity:</b>	<i>Arabidopsis thaliana</i>

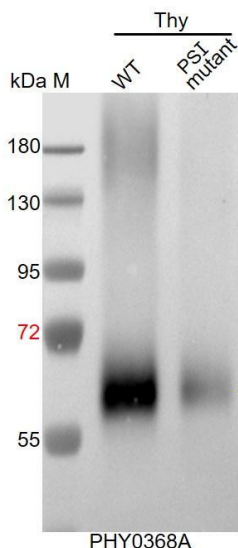
Research Use Only

### Predicted Reactivity:

Among species analyzed, the sequence of the synthetic peptide used for immunization is 100% homologues with the sequence in *Solanum tuberosum*, *Brassica rapa*, *Medicago truncatula*, *Chlamydomonas reinhardtii*, *Populus trichocarpa*, *Cucumis sativus*, *Spinacia oleracea*, *Brassica napus*, *Nicotiana tabacum*, *Solanum lycopersicum*, *Vitis vinifera*, and 80-99% homologues with the sequence in *Glycine max*, *Physcomitrium patens*, *Glycine max*, *Oryza sativa*, *Zea mays*, *Sorghum bicolor*, *Hordeum vulgare*, *Setaria viridis*, *Triticum aestivum*, *Synechocystis sp.* PCC 6803.

For more species homologues information, please contact tech support at [tech@phytoab.com](mailto:tech@phytoab.com).

### Application Example



**Thy-WT:** thylakoid membrane protein from WT of *Arabidopsis thaliana* containing 0.5 µg of chlorophyll.

**Thy-PS I mutant:** thylakoid membrane protein from an *Arabidopsis* mutant with low accumulation of PS I containing 0.5 µg of chlorophyll.

**Electrophoresis:** 12% SDS- PAGE

**Transfer:** blotting to NC (nitrocellulose) membrane for 1 h.

**Blocking:** 5% skim milk at RT or 4°C for 1 h.

**Primary antibody:** 1:2000 dilution overnight at 4°C.

**Secondary antibody:** 1:10000 dilution using Goat Anti-Rabbit IgG

H&L (HRP) (Cat# PHY6000)

**Detection:** using chemiluminescence substrate and image were captured with CCD camera.